

ANNEX-3

Social Profile

HOUSEHOLD PROFILE IN THE PROJECT IMPACT ZONE

The majority of data for the Household profile within the Aol has been received through community level questionnaires made with the each neighbourhood's Mukhtar. Also, in terms of qualitative aspects, focus group discussions with the community members (men and women separately) have been used to present appropriate outlook for the given sections below.

Age Groups

The age distribution of each neighbourhood can be found in the [Figure 1](#) below. Before getting into analyzing, it is important to note that the population of Tepeköy is higher compared to rest of the neighbourhoods within the borders of Aol. Overall, majority of the community members falls within the age group between 26 to 39. The number of individuals who are aged 65 and over seems to be low, whereas, Tepeköy has the highest number of individuals who are aged between 19 to 25.

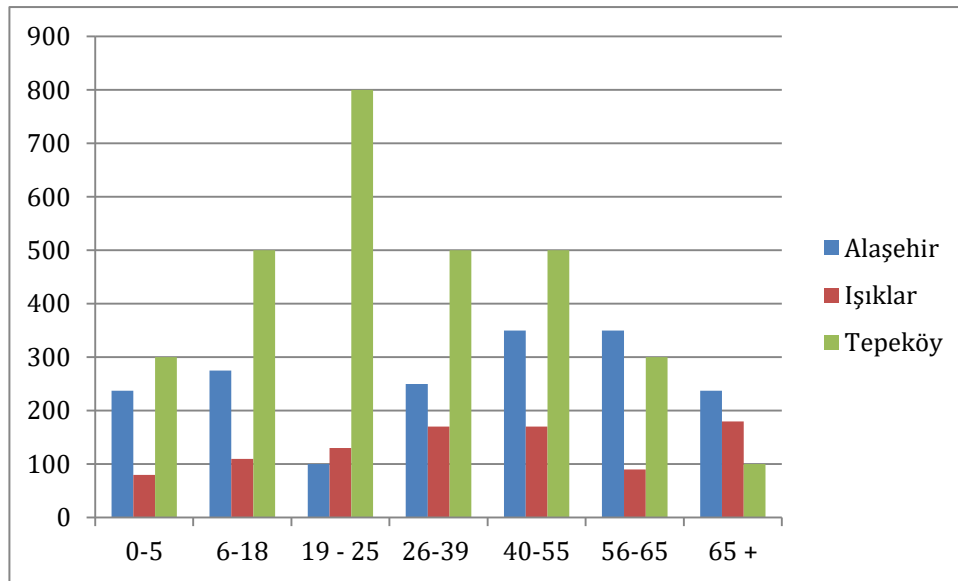


Figure 1. Age Distribution of Survey Population on the Basis of Neighbourhoods

Education

The primary school graduates constitutes majority of the community and middle (secondary) school graduates are the second most populous group within the borders of the Aol. According to the community level questionnaires, highest education levels are observed in Tepeköy neighbourhood. Detailed education levels of the community members can be seen from the [Figure 2](#) below.

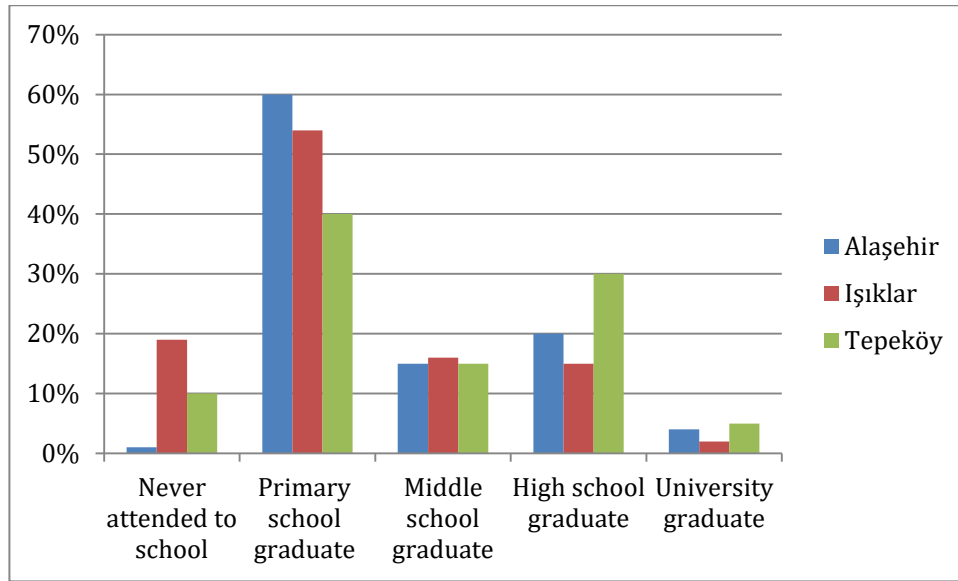


Figure 2. Education indicators of the community members within the Aol

Employment and Income

According to interviews held at with the community members, almost all of the community members are occupied with viticulture for income. Retired individuals constitute second major population in terms of income paramteres within the Aol. Animal husbandary do not seemed to be source of income for neither neighbourhoods, instead, used for household purposes.

Unemployment is the main concern for all the neighbourhoods within the Aol, esoeially, Tepeköy neighbourhood has high rate of unemployment, especially individuals within the age group of age 19-25.

Vulnerable Groups

The interviews with the community members through focus group discussions revealed that vulnerable groups are mostly comprised of individuals with disability and individuals living based on donations due to low or no income. Furthermore, there are considerable amount of individuals who are aged 70 and over within the Aol, the majority of elder groups stated to be reside in Alaşehir neighbourhood. Last, according to interviews, there are female head of household mainly in Alaşehir neighbourhood.

Project Information Level

The result of household surveys related to Project information level is presented respectively for each settlements below.

- Tepeköy: According to the Female Focus Group meeting occurred on April 19, 2017, almost all of the participants have no information regarding the Project. The participants did not have proper information regarding the gheothermal power plants as well.

On the other hand, according to Male Focus Group meeting, approximately more than half of the participants did not have a information about the Project.

- **Işıklar:** According to the Female Focus Group meeting occurred on April 18, 2017, the participants do not have specific information regarding the Project. However, there is a general knowledge about geothermal power plants.
On the other hand, according to Male Focus Group meeting, more than half of the participants did not have information about the Project.
- **Baklacı:** According to the Female Focus Group meeting occurred on April 18, 2017, the participants do not have specific information regarding the Project. However, there is a general knowledge about geothermal power plants surrounding the neighbourhood. To conclude, the participants could not address specific opinions for the Project.
On the other hand, according to Male Focus Group meeting, more than 70 % of the participants are aware of the Project.

The information given above shows that, there is a serious need of information disclosure regarding the Project. Information level of Baklacı is higher than the other settlements.

Respondents recommended following suggestions to raise their level of knowledge regarding the Project. Different expectations of each settlement and suggested grievance mechanism are presented below;

Table 1. Suggested Information Disclosure and Grievance Tools

Name of the Neighbourhood	Information Disclosure Tool	Suggested Grievance Tool
Tepeköy	<ul style="list-style-type: none"> • Project personnels should provide brief information in the neighbourhood including the impacts and grievance mechanism for the Project. 	<ul style="list-style-type: none"> • Phone -line • Community lesion officer should be hired • Project authorities should visit the settlement.
Işıklar	<ul style="list-style-type: none"> • Project personnels should provide brief information in the neighbourhood including the impacts and grievance mechanism for the Project. • Brochures can be used to inform phases of the Project. 	<ul style="list-style-type: none"> • Community lesion officer should be hired • Project authorities should visit the settlement. • Phone-line
Baklacı	<ul style="list-style-type: none"> • Project personnels should provide brief information in the neighbourhood including the impacts and grievance mechanism for the Project. • Brochures can be used to inform phases of the Project. 	<ul style="list-style-type: none"> • Community lesion officer should be Project authorities should visit the settlement. • Phone-line