

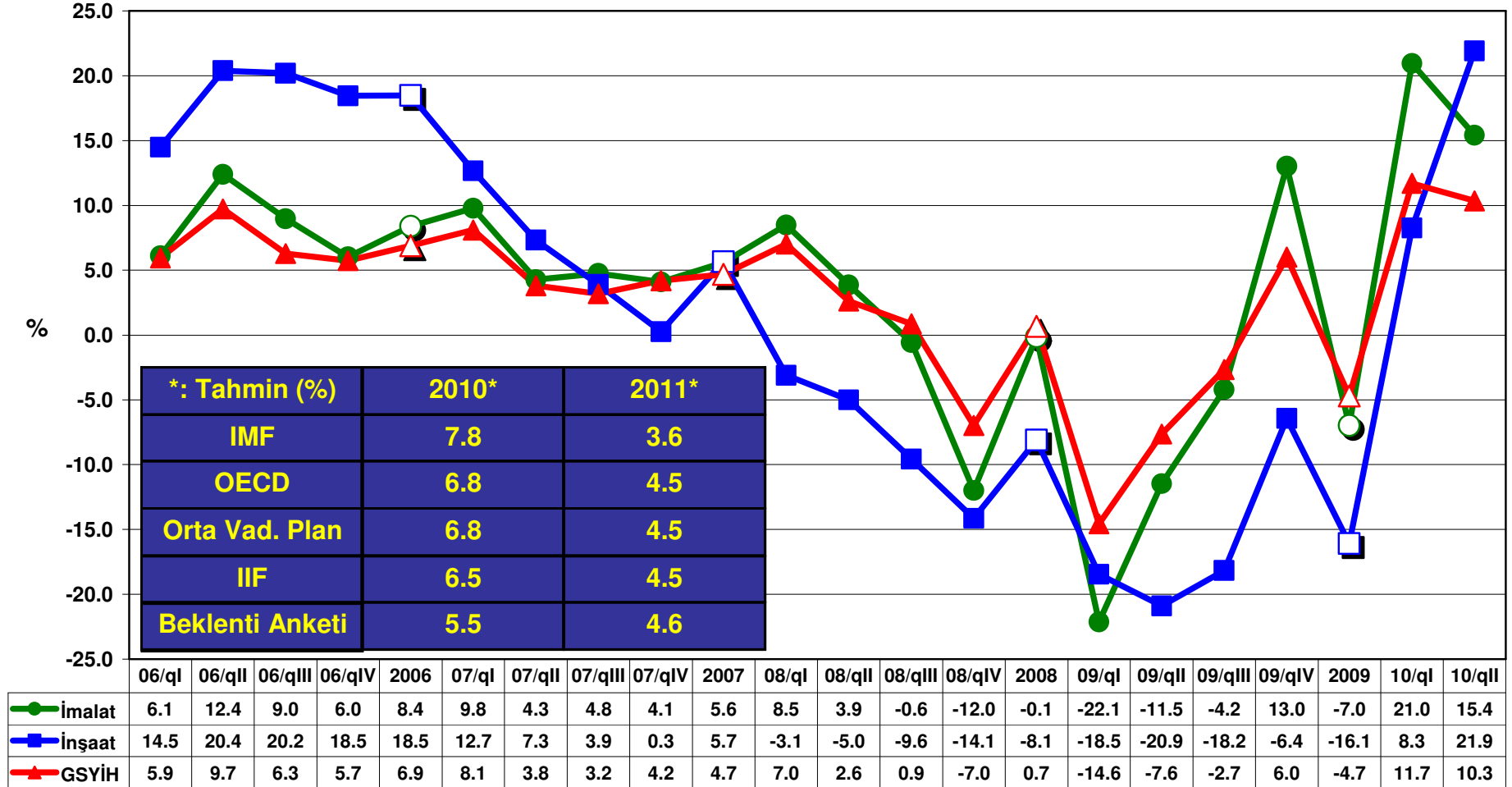
# TEMEL MAKROEKONOMİK GÖSTERGELERDEKİ GELİŞMELER

EKONOMİK VE SOSYAL ARAŞTIRMALAR MÜDÜRLÜĞÜ

26.10.2010

## I - BÜYÜME

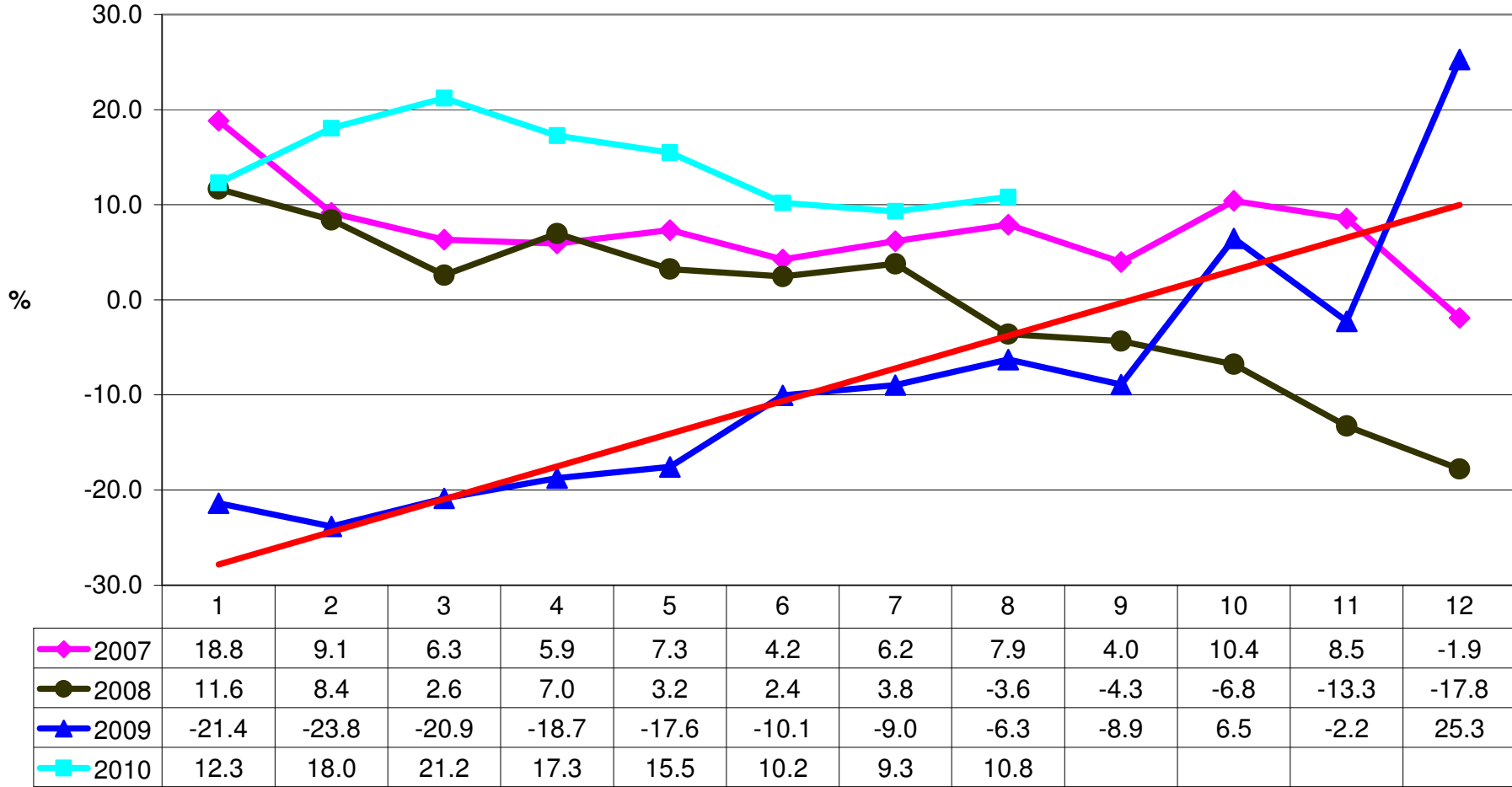
### Sektörlere Göre GSYİH Büyüme Oranları



Kaynak: TÜİK

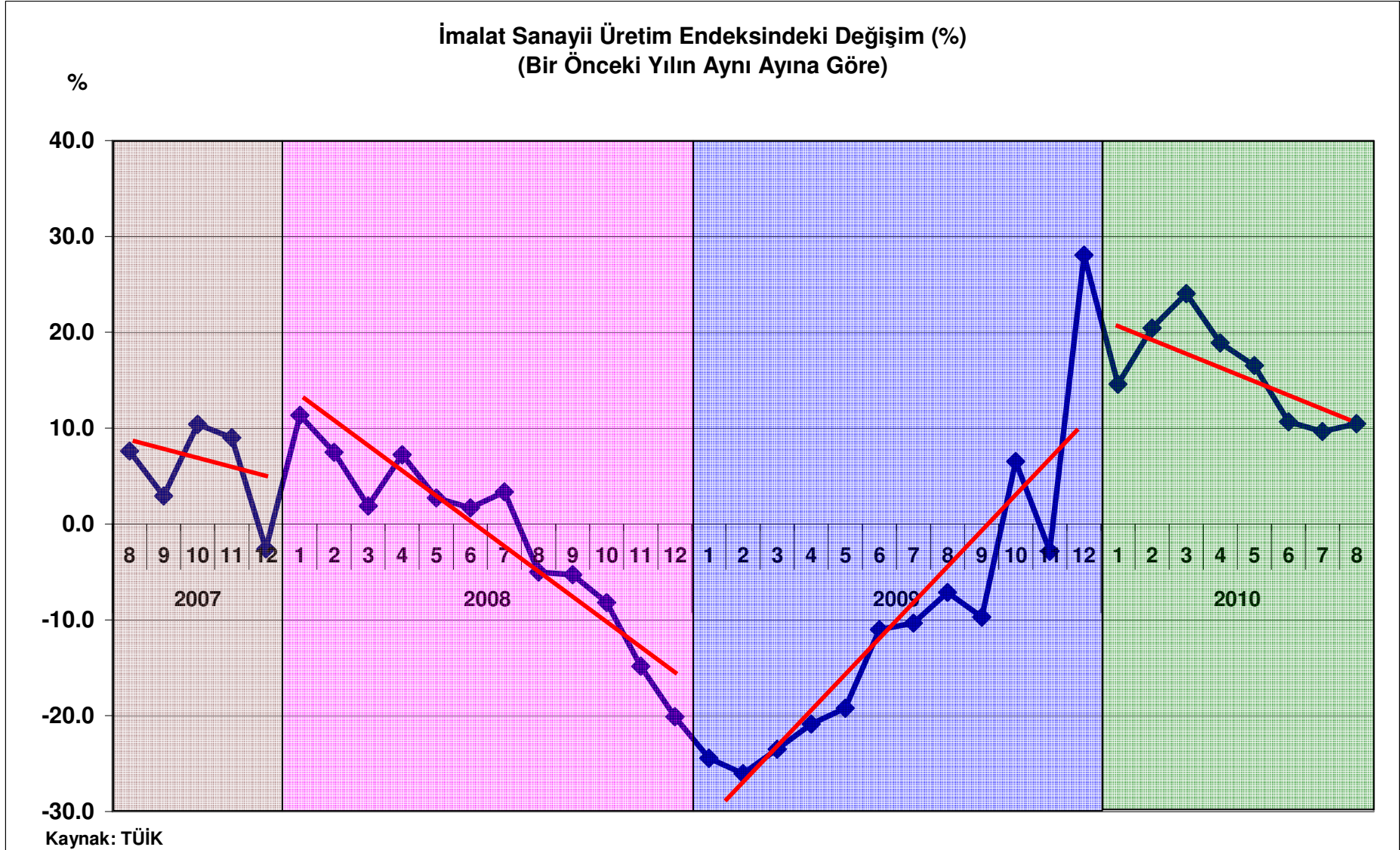
## II - ÜRETİM

Aylık Sanayi Üretim Endeksi Değişimi (%)  
(Bir önceki yılın aynı ayına göre)



Kaynak: TÜİK

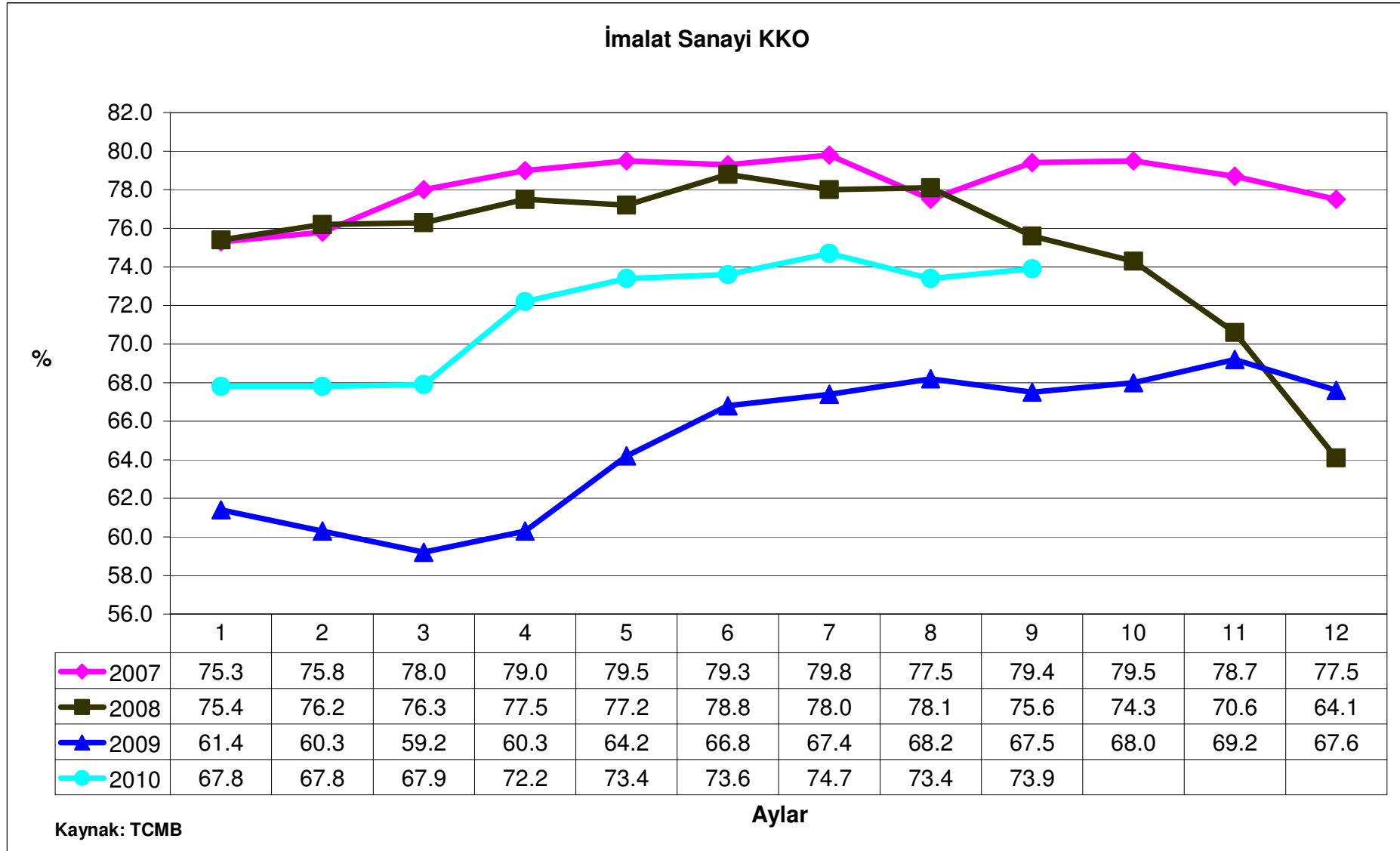
Aylar

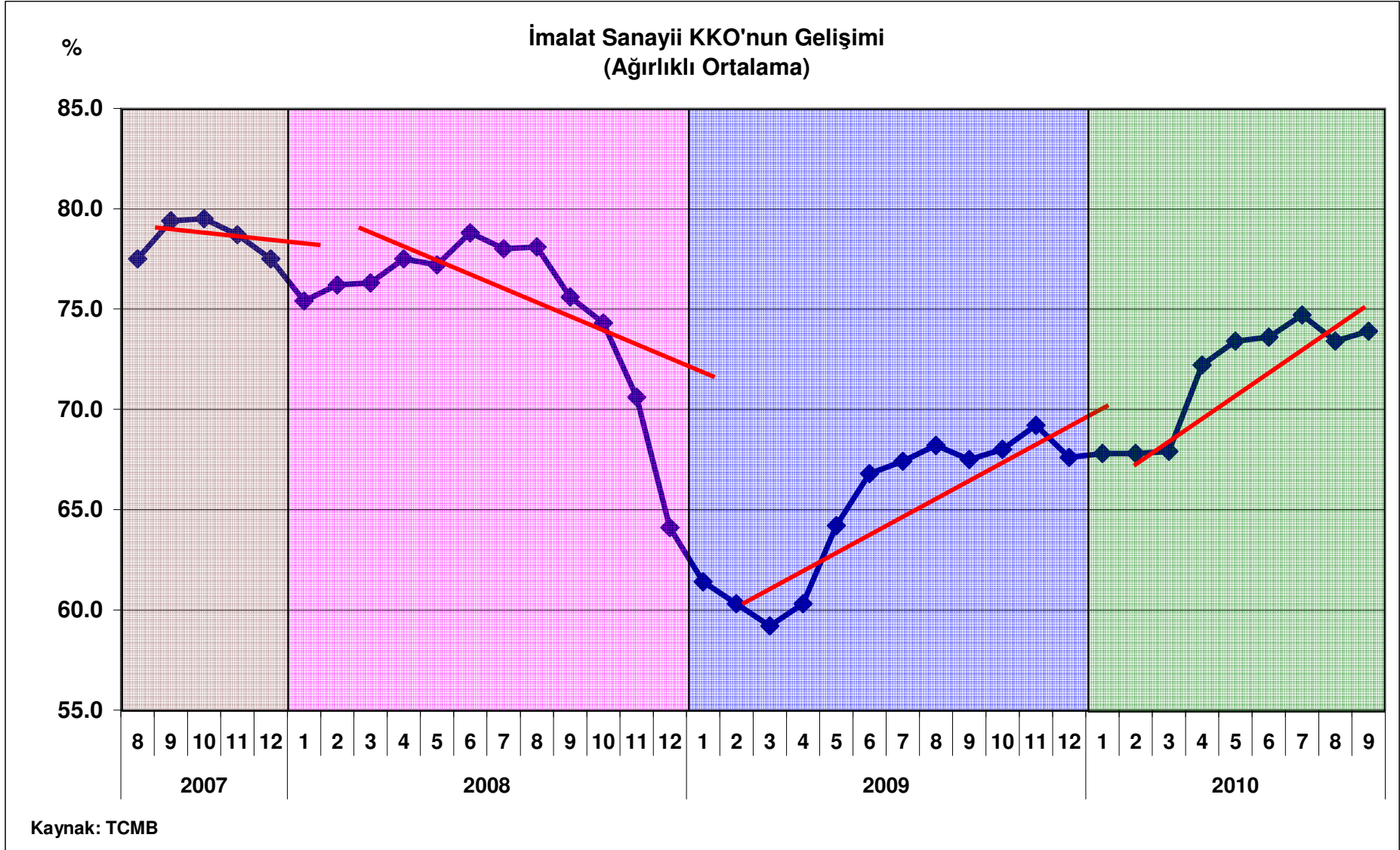


**Sektörler İtibariyle İmalat Sanayi Üretim Endeksindeki Değişim  
( Bir Önceki Yılın Aynı Ayına Göre (2005=100))**

	Ağu.10 Endeks	Değişim (%)												
		Ağu.09	Eyl.09	Eki.09	Kas.09	Ara.09	Oca.10	Şub.10	Mar.10	Nis.10	May.10	Haz.10	Tem.10	Ağu.10
<b>Sanayi</b>	<b>104.2</b>	<b>-6.3</b>	<b>-8.9</b>	<b>6.5</b>	<b>-2.2</b>	<b>25.3</b>	<b>12.3</b>	<b>18.0</b>	<b>21.2</b>	<b>17.3</b>	<b>15.5</b>	<b>10.2</b>	<b>9.3</b>	<b>10.8</b>
<b>İmalat Sanayi</b>	<b>109.3</b>	<b>-7.2</b>	<b>-9.7</b>	<b>6.5</b>	<b>-2.8</b>	<b>28.0</b>	<b>14.6</b>	<b>20.4</b>	<b>24.0</b>	<b>18.9</b>	<b>16.5</b>	<b>10.7</b>	<b>9.5</b>	<b>10.5</b>
Radio. TV. Haberleşme Cihaz.	30.8	-22.8	-5.5	-9.4	-23.4	-5.0	63.9	27.7	21.5	26.6	15.1	-3.3	-18.6	-18.8
Tütün	107.8	-17.1	-18.6	2.7	-15.2	45.7	-6.2	-20.1	-23.4	-14.1	-41.3	-13.1	-2.5	-1.9
Büro. Muh. ve Bilgi İşlem Mak.	72.5	-18.1	23.3	-31.5	-56.2	-31.3	-25.8	-13.5	-36.7	-46.7	-54.1	-57.7	-63.6	1.3
Kağıt ve Kağıt Ürünleri	125.6	0.7	-9.6	8.6	-6.1	34.2	8.1	19.7	15.4	12.0	6.8	6.0	2.3	2.4
Kimya	130.0	7.2	7.1	15.2	6.8	34.4	12.6	21.6	20.9	9.8	11.7	4.2	-0.4	3.9
...	...	...	...	...	...	...	...	...	...	...	...	...	...	...
Metal Eşya Sanayi	111.7	-14.7	-16.4	1.6	-7.2	34.2	17.5	35.0	30.6	36.3	28.6	15.3	23.5	19.0
Plastik ve Kauçuk	125.2	-7.7	-9.5	8.8	-4.7	44.7	22.7	31.7	32.4	22.8	22.6	11.8	17.8	19.3
Elektrikli Makine ve Cihazlar	147.3	2.5	-3.1	18.5	10.5	40.0	12.5	30.1	68.3	52.4	57.1	40.4	26.8	20.8
Otomotiv	85.3	-4.7	-15.5	-0.2	13.1	85.3	66.7	71.1	56.9	30.5	26.0	26.0	3.3	21.8
Tıbbi Aletler. Optik Aletler. Saat	147.7	-18.1	0.2	38.3	18.5	11.2	18.2	19.9	-21.9	18.8	40.4	20.0	29.2	70.6

Kaynak: TÜİK



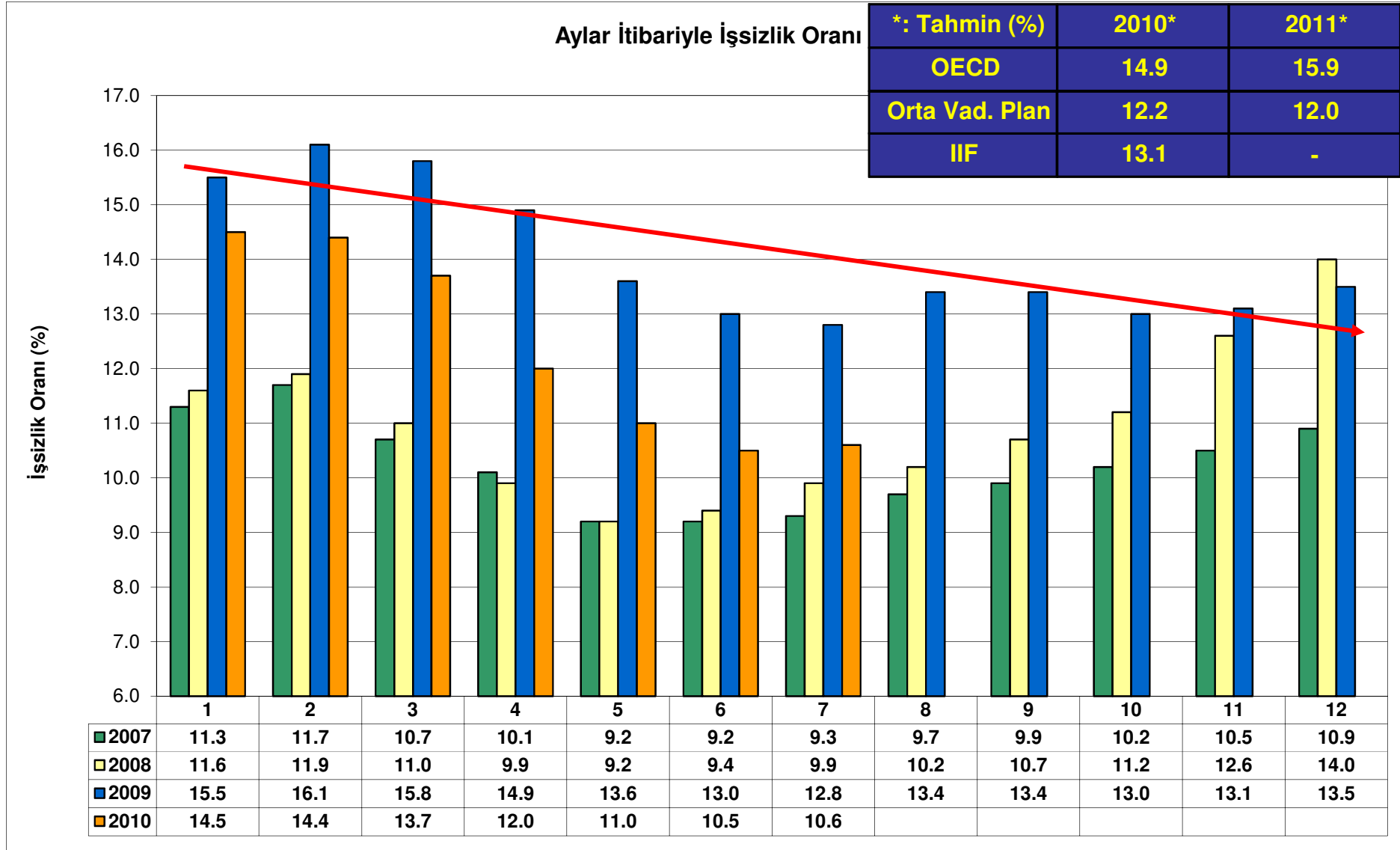


### Sektörler İtibariyle KKO'lardaki Değişim

	Eyl.10 KKO(%)	KKO'daki Değişim (Bir Önceki Yılın Aynı Ayına Göre. Puan)												
		Eyl09	Eki09	Kas09	Ara09	Oca10	Şub10	Mar10	Nis10	May10	Haz10	Tem10	Ağu10	Eyl10
<b>İmalat Sanayii</b>	<b>73.9</b>	<b>-8.1</b>	<b>-6.3</b>	<b>-1.4</b>	<b>3.5</b>	<b>6.4</b>	<b>7.5</b>	<b>8.7</b>	<b>11.9</b>	<b>9.2</b>	<b>6.8</b>	<b>7.3</b>	<b>5.2</b>	<b>6.4</b>
Gıda ve İçki	69.5	-5.3	-4.4	-1.9	-1.4	1.9	3.2	5.9	4.1	2.6	-1.0	-0.2	-2.0	-0.2
Radyo. TV. Haberleşme Cihaz.	70.0	10.6	9.3	12.8	5.5	6.1	5.6	11.9	16.6	6.1	9.7	-3.2	-5.0	0.6
Basım ve Yayım	68.1	0.8	6.0	10.8	8.7	2.8	4.8	6.8	3.4	6.2	1.2	0.9	-2.0	1.1
Ağaç ve Mantar Ürünleri	81.4	-2.3	-1.3	6.4	13.6	12.3	13.6	13.7	19.6	15.1	9.0	7.7	3.4	2.2
Tıbbi Aletler. Optik Aletler. Saat	72.2	-3.2	5.1	3.1	9.3	11.6	10.9	13.8	13.0	6.3	10.3	6.1	4.3	2.4
...	...	...	...	...	...	...	...	...	...	...	...	...	...	...
Makine ve Techizat	72.4	-7.7	-7.7	-3.2	0.7	4.6	9.1	8.3	12.8	10.8	9.3	9.4	9.7	8.5
Diğer Ulaşım Araçları	72.2	-18.6	-19.5	-14.1	-15.9	-19.8	-7.2	-4.3	0.1	3.6	-5.4	6.7	3.4	9.1
Elektrikli Makine ve Cihazlar	74.3	-17.8	-16.1	-12.5	-7.4	-4.8	-2.8	0.5	4.0	-2.5	6.0	10.7	10.4	9.8
Petrol Ürünleri	68.9	-37.1	-37.1	-33.3	-23.0	0.3	-1.6	-2.9	22.6	13.0	5.4	2.4	14.0	12.8
Otomotiv	70.1	-19.1	-17.2	-8.8	6.8	11.5	20.6	19.9	19.9	12.7	8.1	8.5	2.9	13.8

Kaynak: TCMB

### III - İSTİHDAM



Kaynak: TÜİK

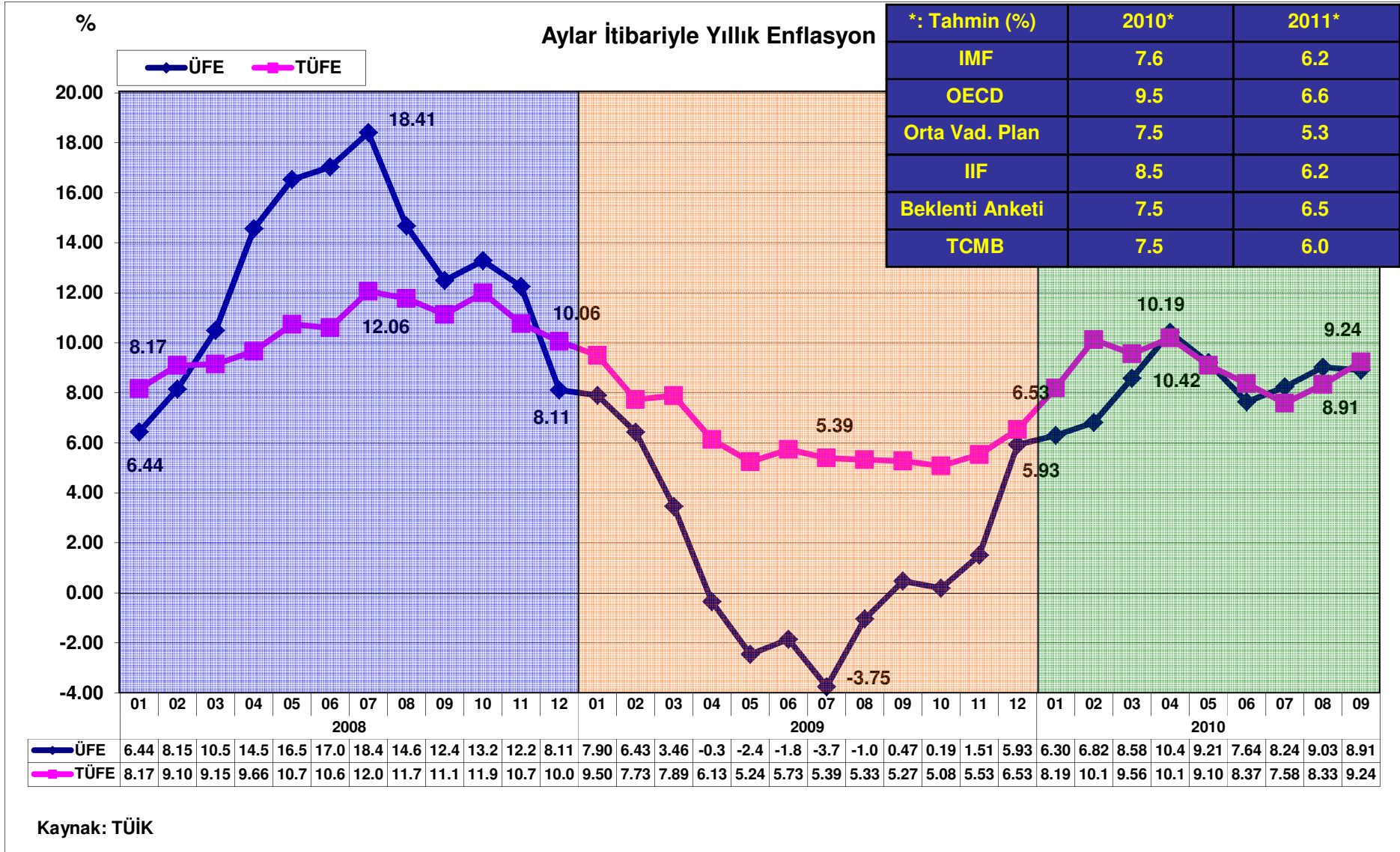
## İŞGÜCÜ DURUMU

	15 ve Daha Yukarı Yaştaki Nüfus	İşgücü Arzı	İstihdam Edilenler	Ek İstihdam	İşsizler	Kayıt Dışı İstihdam	İşgücüne Katılma Oranı	İstihdam Oranı	İşsizlik Oranı	Kayıt Dışı İstihdam Oranı
	Bin Kişi						Yüzde			
2001	47,158	23,491	21,524	-57	1,967	11,382	49.8	45.6	8.4	52.9
2002	48,041	23,818	21,354	-170	2,464	11,133	49.6	44.4	10.3	52.1
2003	48,912	23,640	21,147	-207	2,493	10,943	48.3	43.2	10.5	51.7
2004 (*)	47,544	22,016	19,632	-1,515	2,385	9,843	46.3	41.3	10.8	50.1
2005 (*)	48,359	22,455	20,067	435	2,388	9,666	46.4	41.5	10.6	48.2
2006 (*)	49,174	22,751	20,423	356	2,328	9,593	46.3	41.5	10.2	47.0
2007 (*)	49,994	23,114	20,738	315	2,376	9,423	46.2	41.5	10.3	45.4
2008 (*)	50,772	23,805	21,194	456	2,611	9,220	46.9	41.7	11.0	43.5
2009 (*)	51,686	24,748	21,277	83	3,471	9,328	47.9	41.2	14.0	43.8
2006-7 (*)	51,701	25,508	23,257	30	2,251	11,752	49.3	45.0	8.8	50.5
2007-7 (*)	50,025	23,907	21,693	-1,564	2,213	10,291	47.8	43.4	9.3	47.4
2008-7 (*)	50,833	24,587	22,163	470	2,425	10,041	48.4	43.6	9.9	45.3
2009-7 (*)	51,714	25,480	22,213	50	3,267	10,305	49.3	43.0	12.8	46.4
2010-7 (*)	52,572	26,260	23,478	1,265	2,782	10,579	50.0	44.7	10.6	45.1

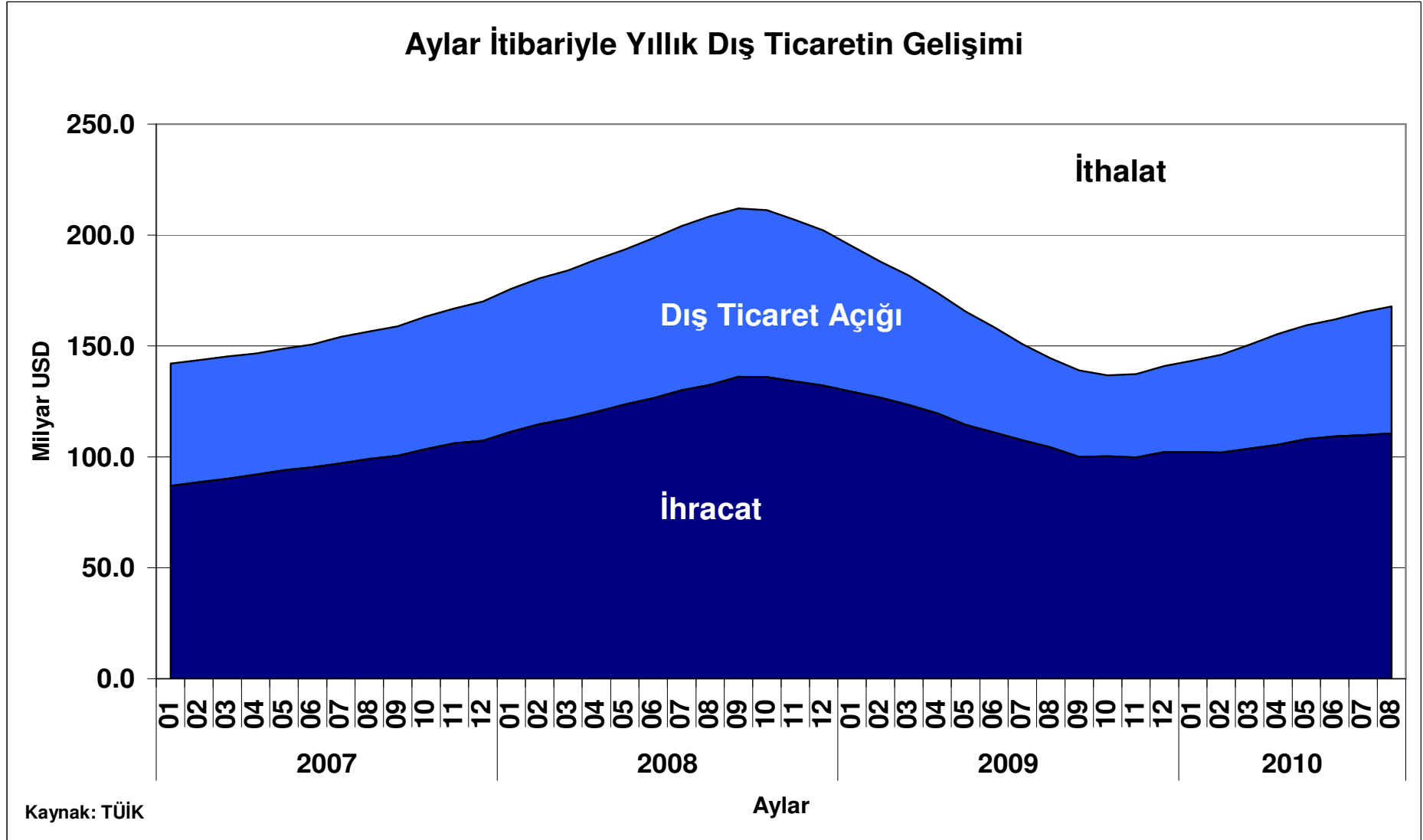
Kaynak: TÜİK

(\*) Yeni nüfus projeksiyonlarına göre revize edilmiştir.

## IV - ENFLASYON



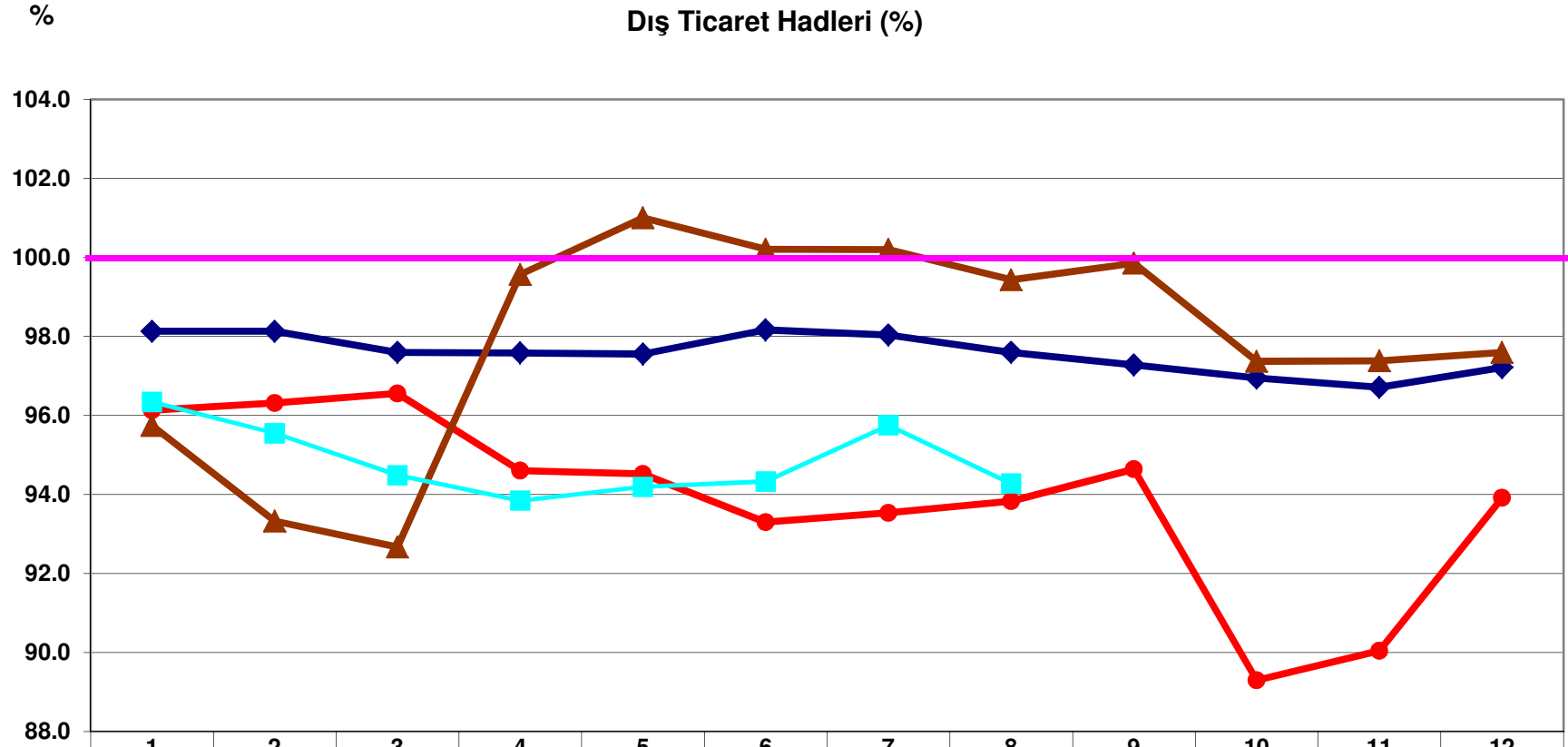
## V - DIŞ TİCARET



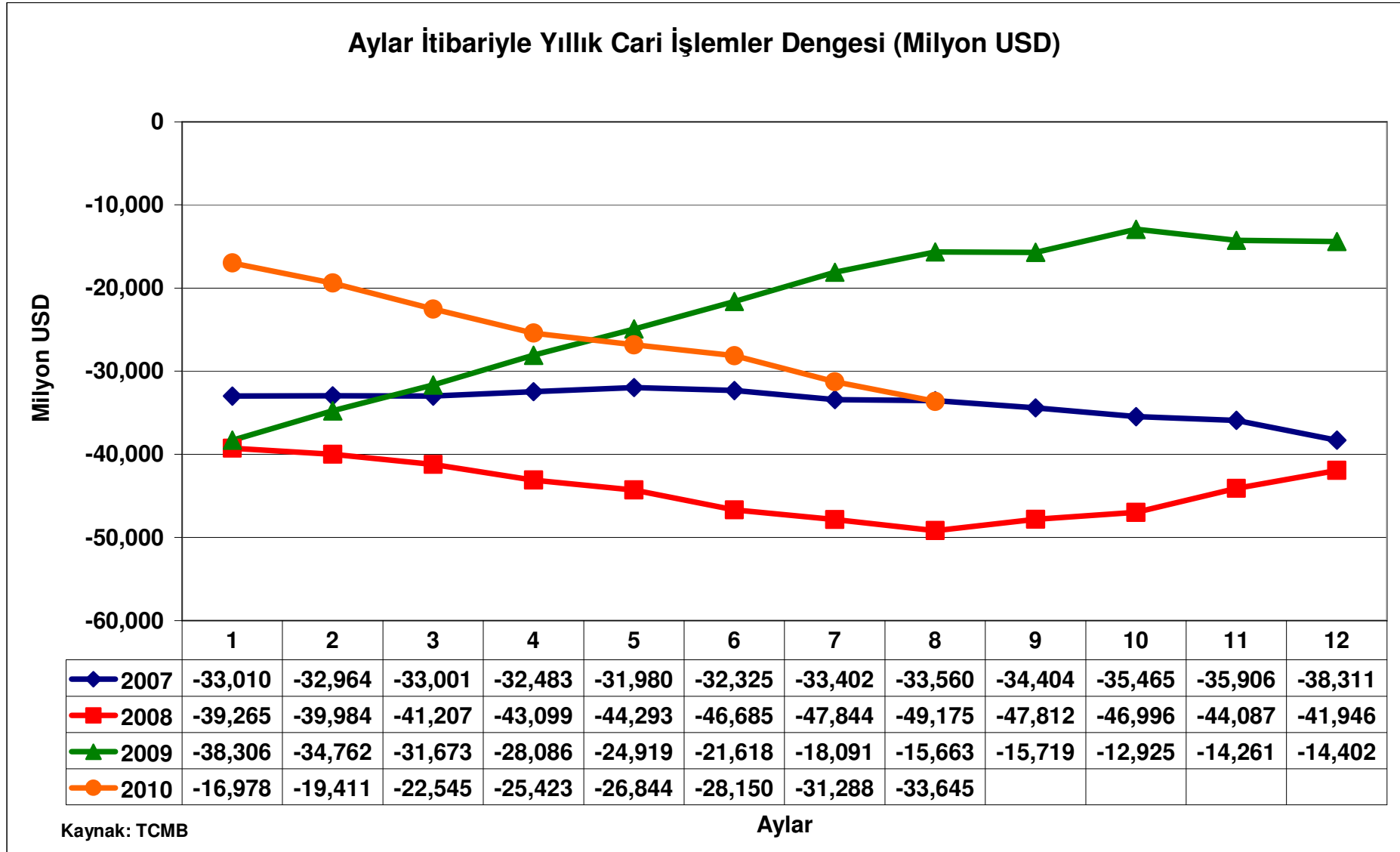
## TÜRKİYE'NİN İHRACATININ ÜLKE GRUPLARINA GÖRE DAĞILIMI

	2001	2002	2003	2004	2005	2006	2007	2008	2009	Ocak-Ağustos	
										2009	2010
<b>TOPLAM</b>	100.0	100.0	100.0	100.0	100.0	100.0	100.0	100.0	100.0	100.0	100.0
<b>A-AVRUPA BİRLİĞİ ÜLKELERİ (AB 27)</b>	56.0	56.6	58.0	57.9	56.3	56.0	56.3	48.0	46.0	44.4	45.8
<b>B-TÜRKİYE SERBEST BÖLGELERİ</b>	3.0	4.0	4.1	4.1	4.0	3.5	2.7	2.3	1.9	1.9	1.8
<b>C-DİĞER ÜLKELER</b>	41.0	39.4	37.9	38.0	39.7	40.5	41.0	49.7	52.1	53.7	52.4
1-Diğer Avrupa (AB Hariç)	6.7	7.2	7.1	7.1	8.0	9.3	10.1	11.9	11.1	11.9	10.1
2-Kuzey Afrika	3.7	3.5	3.3	3.5	3.5	3.6	3.8	4.4	7.3	7.8	6.6
3-Diğer Afrika	1.2	1.2	1.2	1.2	1.5	1.7	1.8	2.4	2.7	3.1	2.0
4-Kuzey Amerika	10.5	10.0	8.4	8.2	7.2	6.4	4.2	3.6	3.5	3.5	3.7
5-Orta Amerika ve Karayipler	0.6	0.5	0.4	0.5	0.6	0.6	0.5	0.6	0.6	0.6	0.6
6-Güney Amerika	0.6	0.3	0.3	0.3	0.4	0.4	0.5	0.7	0.7	0.5	1.1
7-Yakın ve Orta Doğu	10.4	9.5	11.6	12.5	13.9	13.2	14.1	19.3	18.8	19.3	20.1
8-Diğer Asya	4.2	5.0	5.0	4.0	4.1	4.6	4.9	5.4	6.6	6.0	7.7
9-Avustralya ve Yeni Zelanda	0.3	0.3	0.3	0.4	0.4	0.4	0.3	0.3	0.4	0.3	0.3
10-Diğer Ülke ve Bölgeler	2.8	1.8	0.4	0.1	0.3	0.2	0.8	1.1	0.5	0.7	0.1

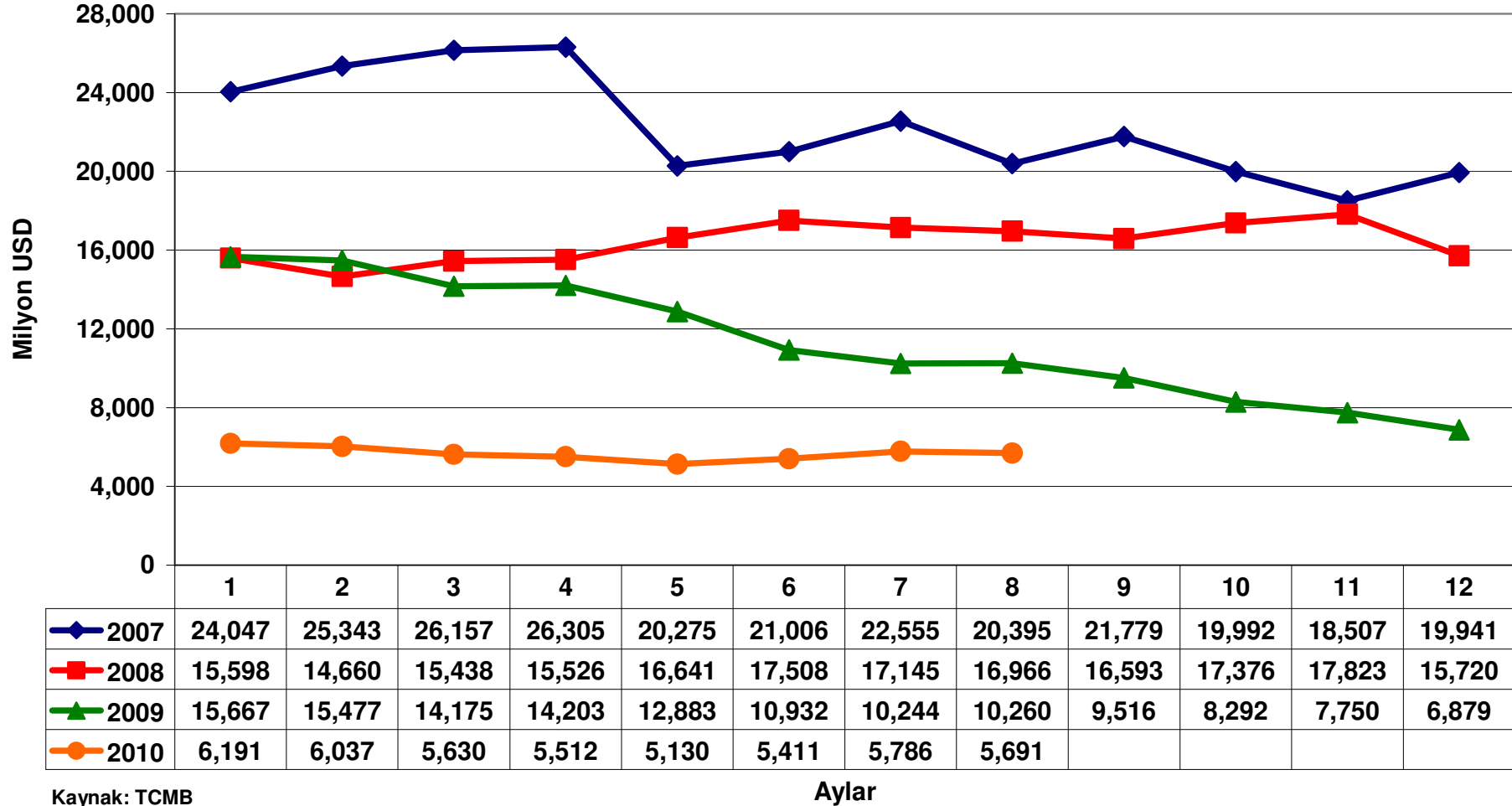
Kaynak: TÜİK

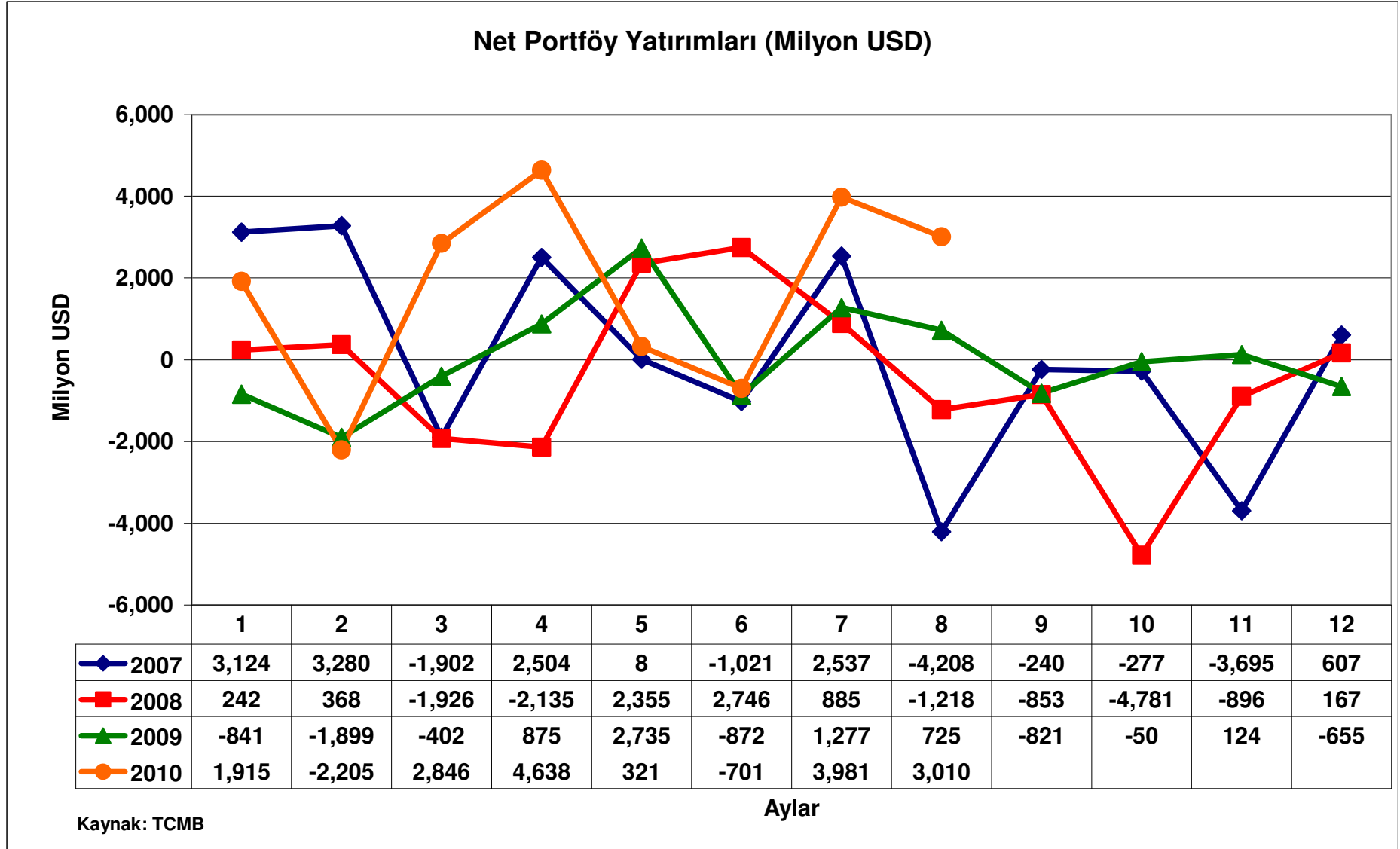


Kaynak: TÜİK

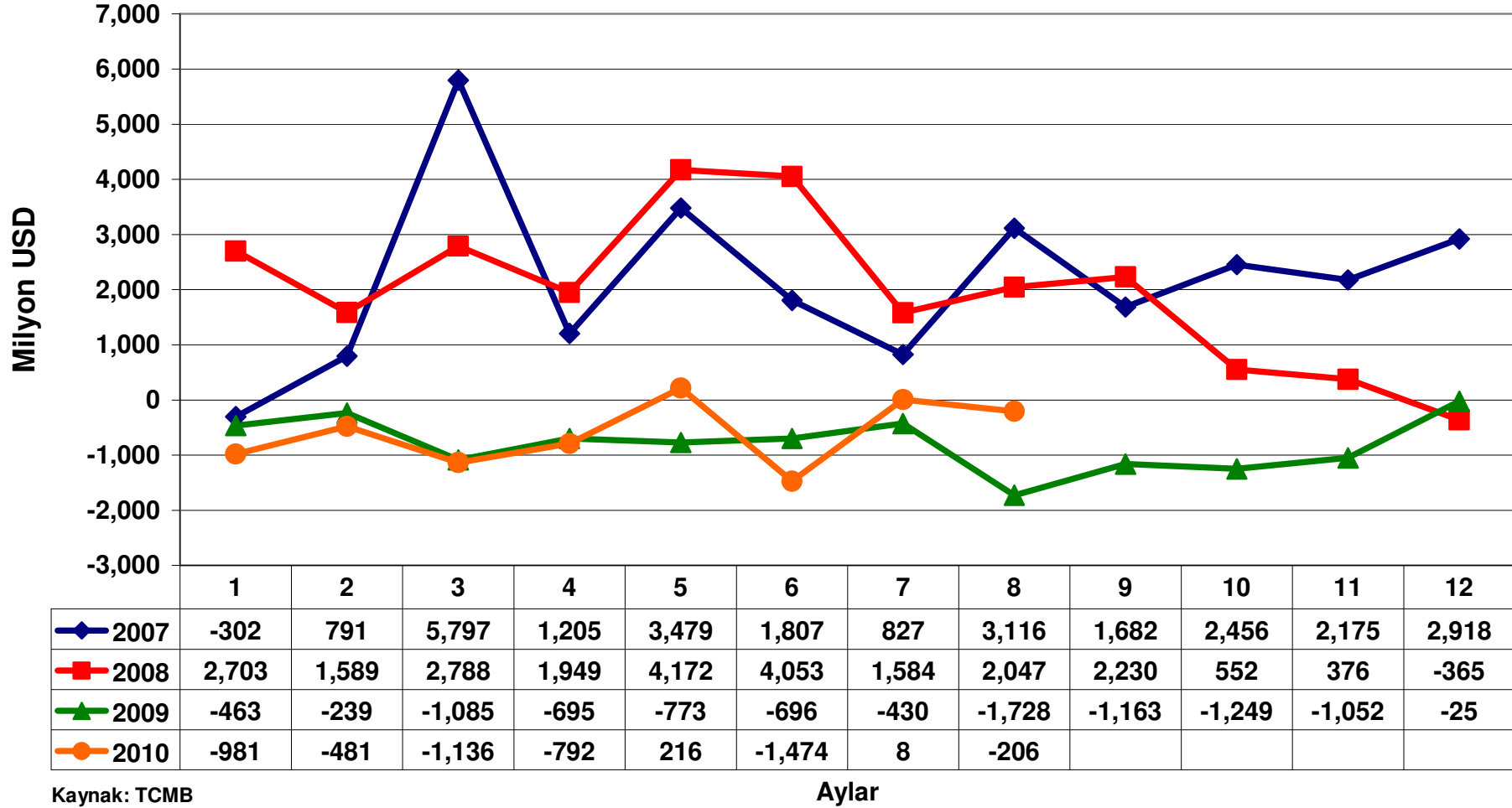


**Aylar İtibariyle Yıllık Net Doğrudan Yatırımlar (Milyon USD)**





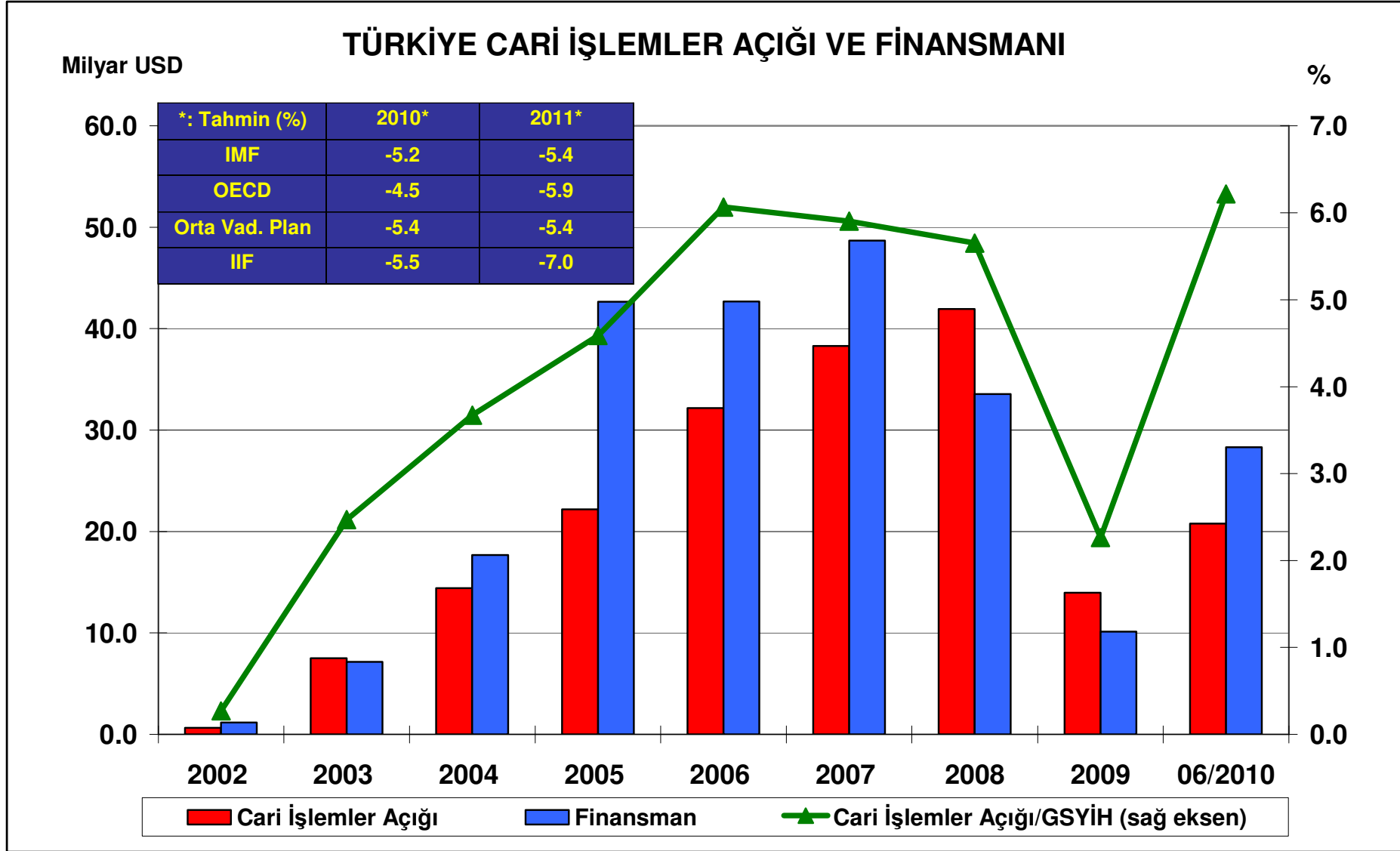
**Bankalar Hariç Özel Sektör Kredileri (Milyon USD)**



## ÖDEMELER DENGESİ ANALİTİK SUNUM

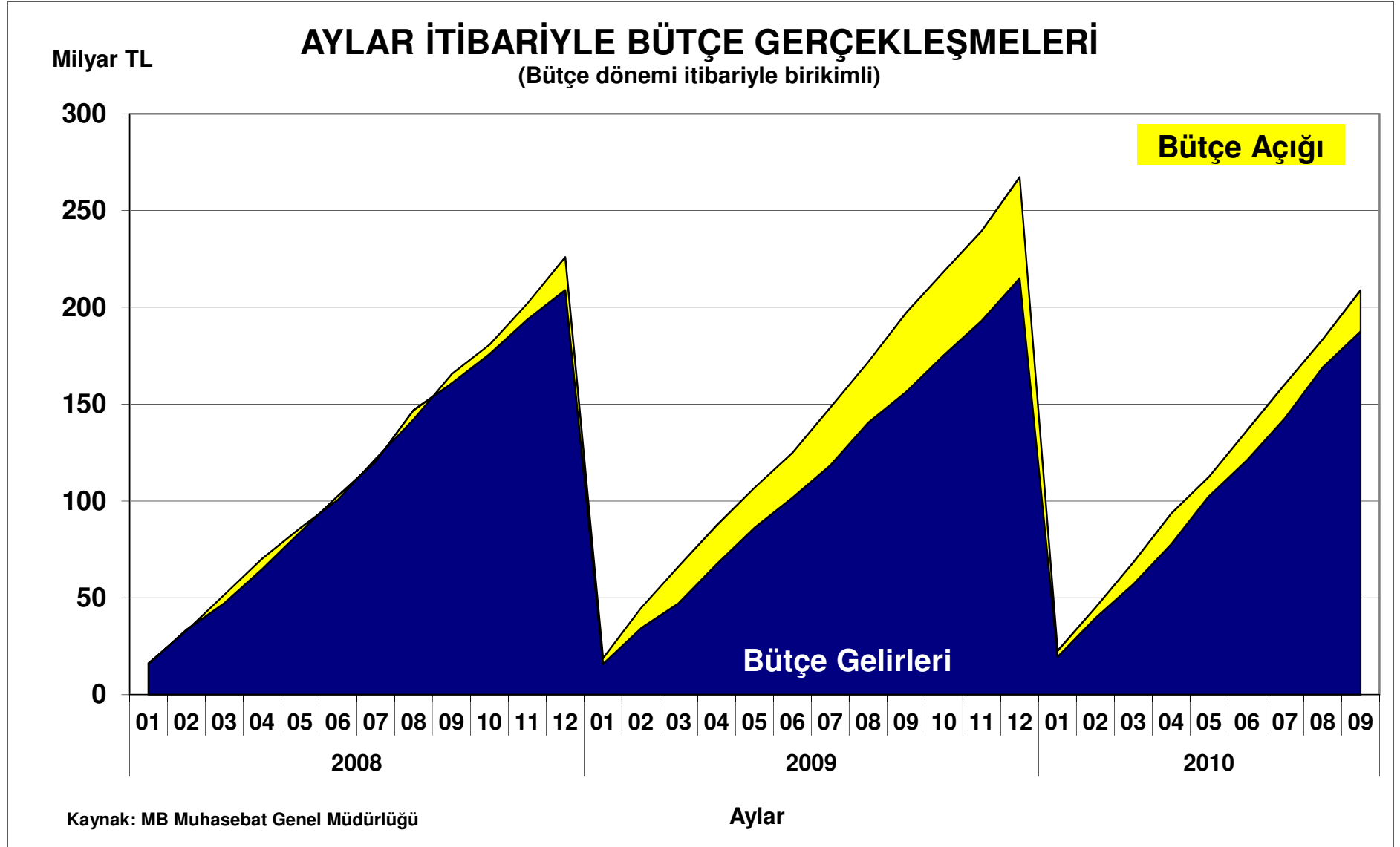
(Milyon ABD Dolar)	2004	2005	2006	2007	2008	2009	Ocak - Ağustos	
							2009	2010
<b>CARİ İŞLEMLER HESABI</b>	<b>-14,431</b>	<b>-22,198</b>	<b>-32,193</b>	<b>-38,311</b>	<b>-41,946</b>	<b>-14,402</b>	<b>-8,735</b>	<b>-27,978</b>
Dış Ticaret Dengesi	-22,736	-33,080	-41,057	-46,795	-53,021	-24,892	-14,737	-32,037
İhracat f.o.b.	68,535	78,365	93,612	115,361	140,800	109,647	69,524	77,407
İthalat f.o.b.	-91,271	-111,445	-134,669	-162,156	-193,821	-134,539	-84,261	-109,444
Hizmetler Dengesi	12,797	15,267	13,612	13,344	17,121	16,305	10,365	8,223
Gelir Dengesi	-5,609	-5,839	-6,656	-7,103	-8,159	-8,114	-5,585	-4,938
Cari Transferler	1,117	1,454	1,908	2,243	2,113	2,299	1,222	774
<b>FİNANS HESABI</b>	<b>17,702</b>	<b>42,660</b>	<b>42,689</b>	<b>48,707</b>	<b>33,547</b>	<b>10,552</b>	<b>3,067</b>	<b>37,916</b>
Net Doğrudan Yatırımlar	2,005	8,967	19,261	19,941	15,720	6,879	5,336	4,148
Net Portföy Hesabı	8,023	13,437	7,373	717	-5,046	196	1,598	13,805
Net Diğer Yatırımlar	7,674	20,256	16,055	28,049	22,873	3,477	-3,867	19,963
<b>NET HATA VE NOKSAN</b>	<b>1,071</b>	<b>2,738</b>	<b>129</b>	<b>1,619</b>	<b>5,641</b>	<b>4,641</b>	<b>5,710</b>	<b>1,152</b>
<b>GENEL DENGE</b>	<b>4,342</b>	<b>23,200</b>	<b>10,625</b>	<b>12,015</b>	<b>-2,758</b>	<b>791</b>	<b>42</b>	<b>-11,090</b>

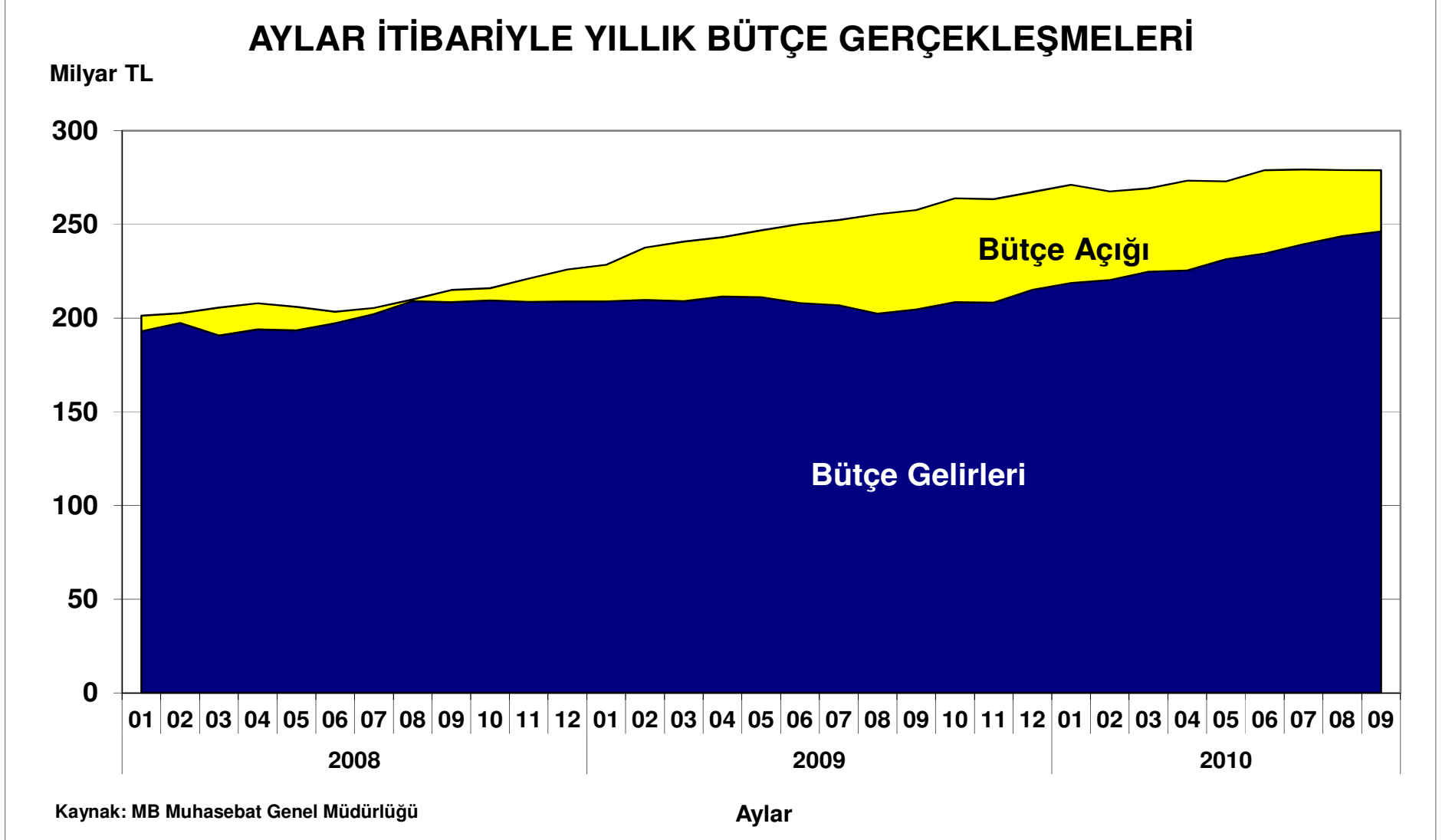
Kaynak: TCMB



Kaynak: TCMB

## VII - BÜTÇE

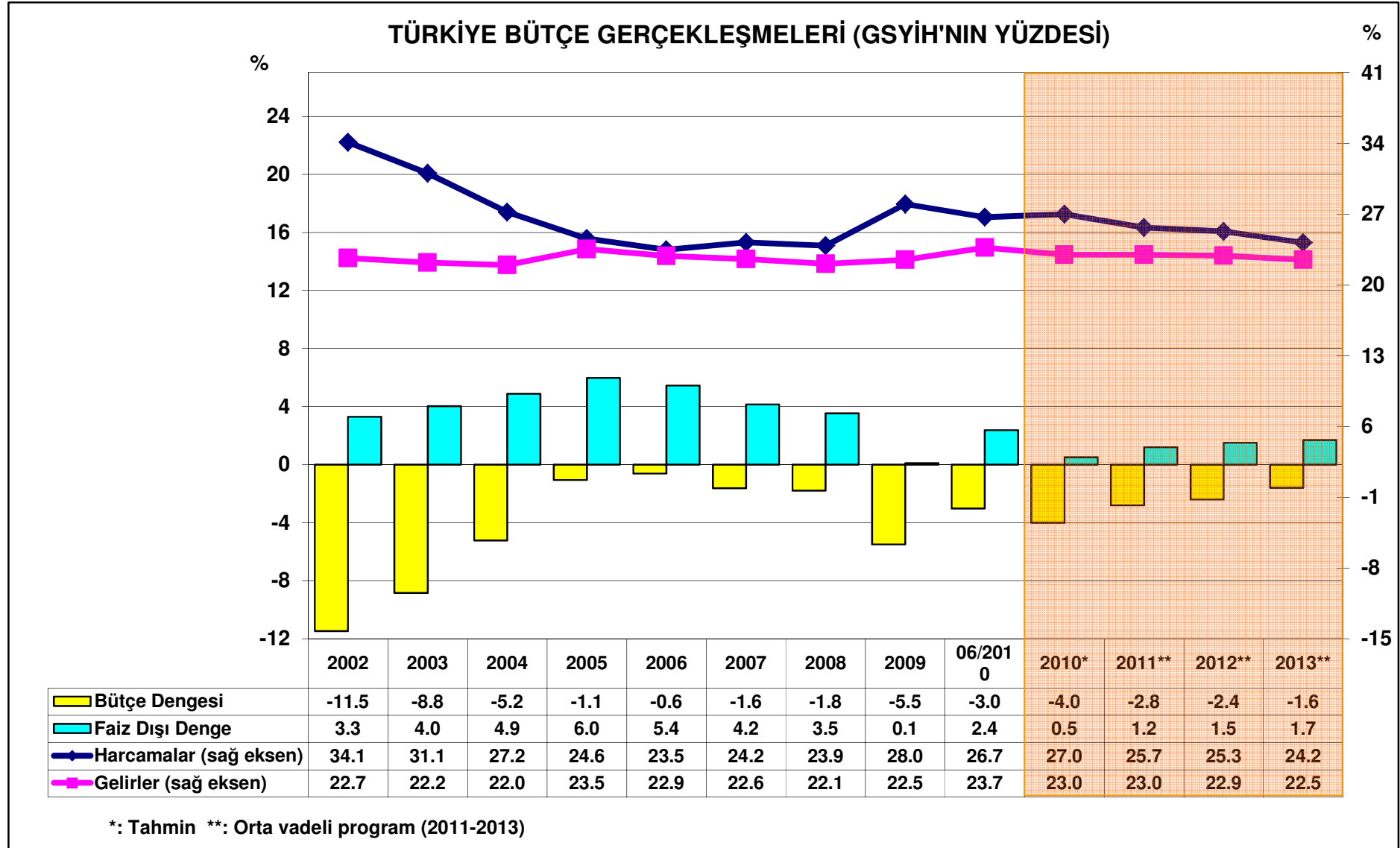




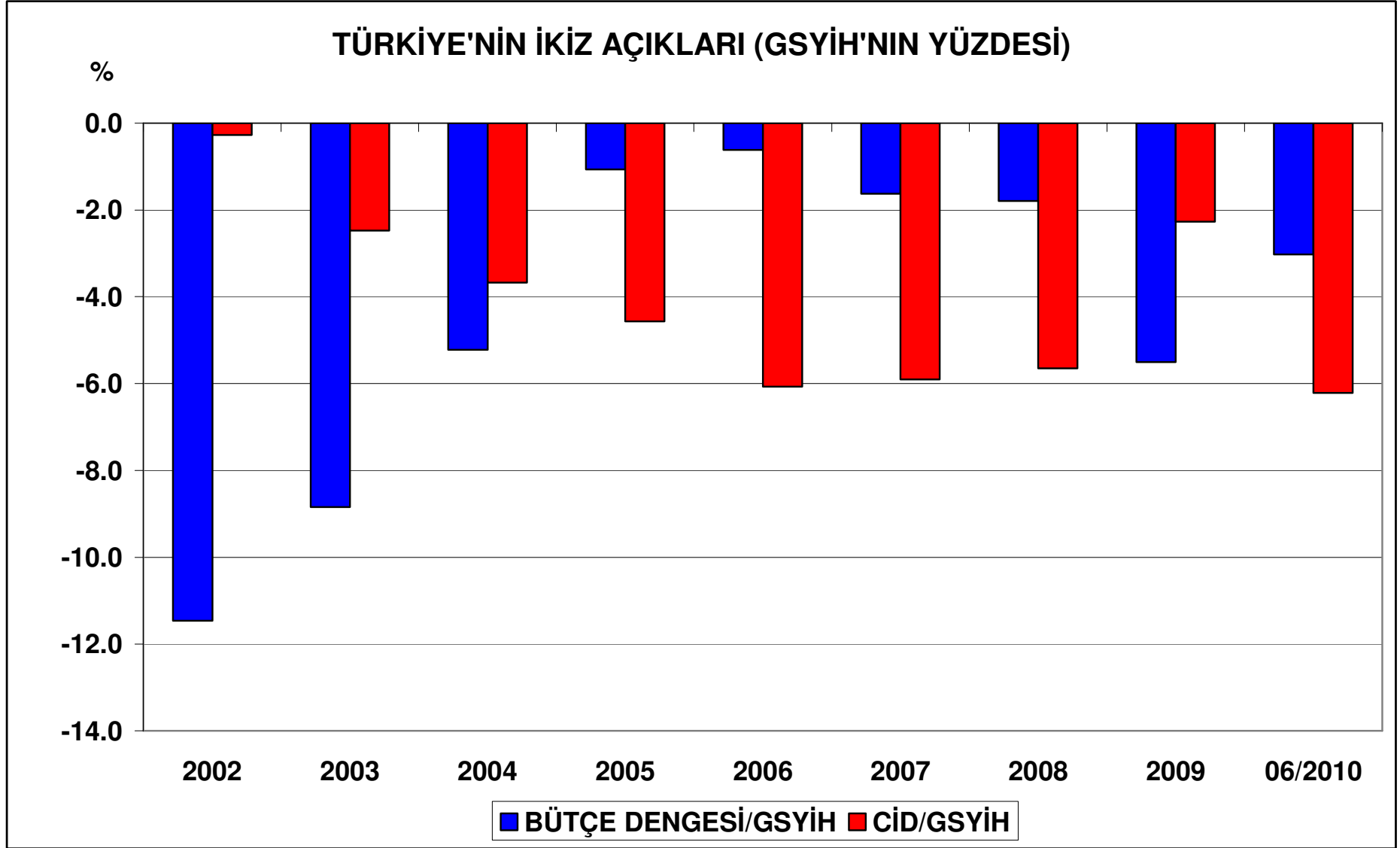
**MERKEZİ YÖNETİM BÜTÇE GERÇEKLEŞMELERİ**

(Milyon TL)	2005	2006	2007	2008	2009	Ocak-Eylül	
						2009	2010
<b>Harcamalar</b>	<b>159,687</b>	<b>178,126</b>	<b>203,501</b>	<b>225,967</b>	<b>267,275</b>	<b>197,169</b>	<b>208,827</b>
Transferler	45,871	49,851	63,249	70,116	91,761	70,205	77,695
Faiz Harcamaları	45,680	45,963	48,732	50,661	53,201	45,512	39,283
Diğer	68,136	82,312	91,520	105,190	122,313	81,451	91,849
<b>Gelirler</b>	<b>152,784</b>	<b>173,483</b>	<b>189,617</b>	<b>208,898</b>	<b>215,060</b>	<b>156,358</b>	<b>187,538</b>
Vergi Gelirleri	119,627	137,480	152,832	168,087	172,417	125,332	153,789
Dahilde Alınan Mal ve Hizmet Vergileri	49,962	59,408	63,590	67,253	73,135	53,510	66,832
Uluslar arası Ticaret ve Muamelelerden Alınan V.	19,295	27,563	28,970	32,775	28,647	20,435	27,892
Diğer Vergi Gelirleri	50,370	50,509	60,272	68,060	70,634	51,387	59,065
Diğer Gelirler	33,157	36,003	36,785	40,811	42,645	31,026	33,748
<b>Bütçe Dengesi</b>	<b>-6,903</b>	<b>-4,643</b>	<b>-13,883</b>	<b>-17,069</b>	<b>-52,215</b>	<b>-40,811</b>	<b>-21,289</b>
<b>Faiz Dışı Denge</b>	<b>38,777</b>	<b>41,320</b>	<b>34,848</b>	<b>33,592</b>	<b>986</b>	<b>4,702</b>	<b>17,994</b>
	<b>(% Pay)</b>						
Transferler/Harcamalar	28.7	28.0	31.1	31.0	34.3	35.6	37.2
Faiz Harcamaları/Harcamalar	28.6	25.8	23.9	22.4	19.9	23.1	18.8
Vergi Gelirleri/Gelirler	78.3	79.2	80.6	80.5	80.2	80.2	82.0
Dolaylı Vergiler/Vergi Gelirleri	62.9	63.3	60.6	59.5	59.0	59.0	61.6
Dâhilde Alınan Mal ve Hizmet Vergileri/Vergi Gelirleri	41.8	43.2	41.6	40.0	42.4	42.7	43.5
Uluslar arası Ticaret ve Muamelelerden Alınan V./Vergiler	16.1	20.0	19.0	19.5	16.6	16.3	18.1

Kaynak: MB Muhasebat Genel Müdürlüğü

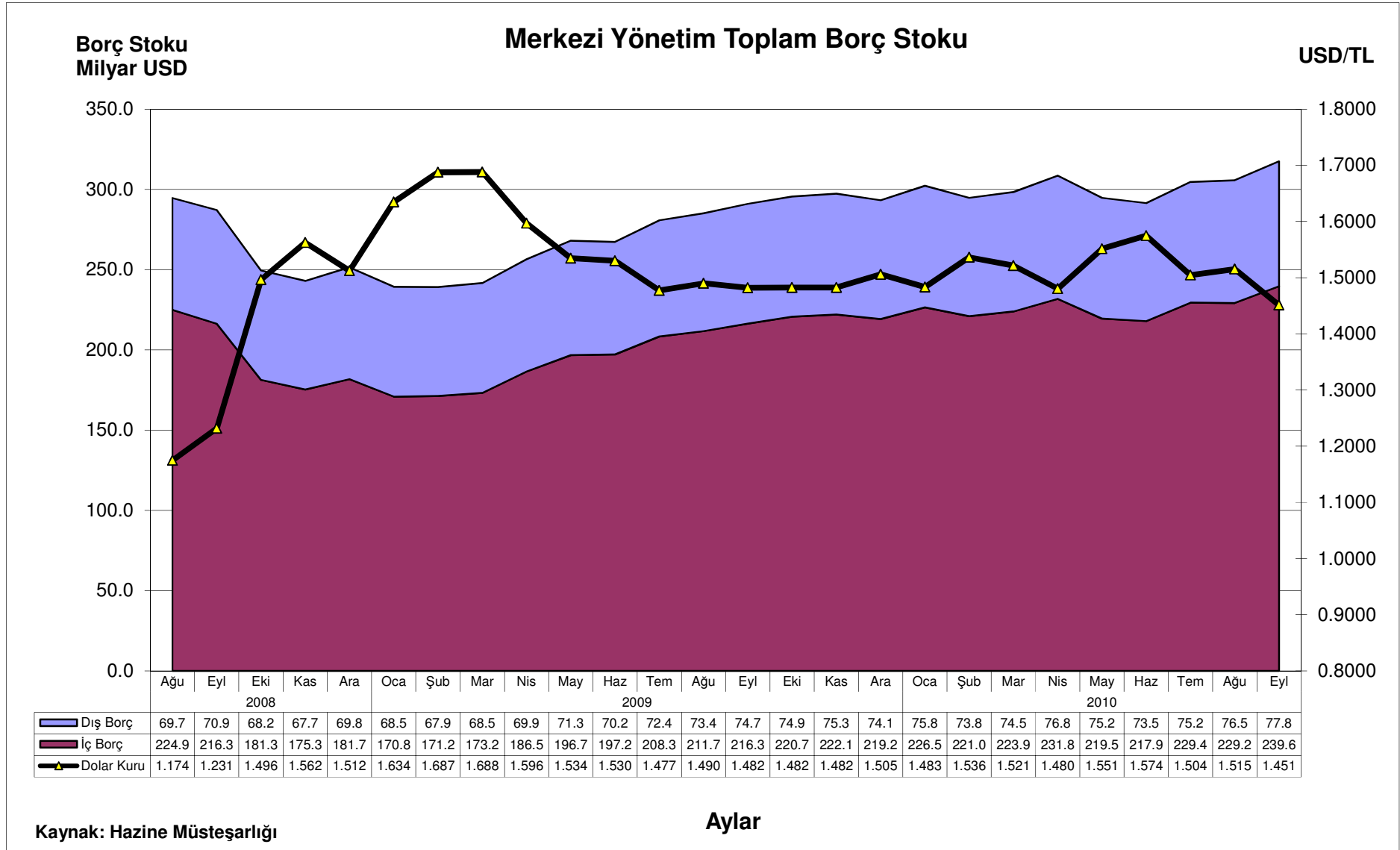


Kaynak: MB, TÜİK



Kaynak: MB, TÜİK, TCMB

## VIII - BORÇ STOKU

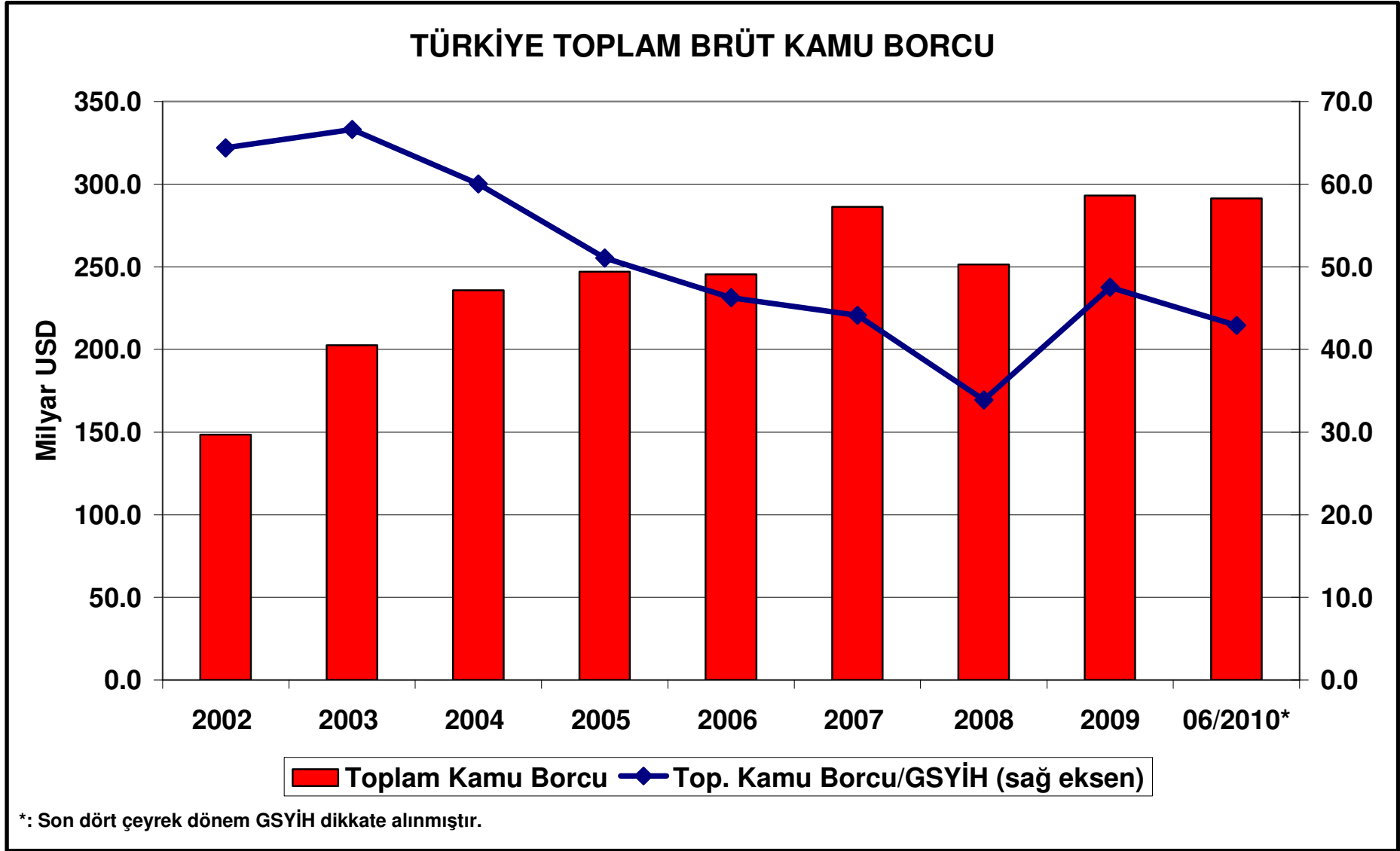


## MERKEZİ YÖNETİM TOPLAM BORÇ STOKU

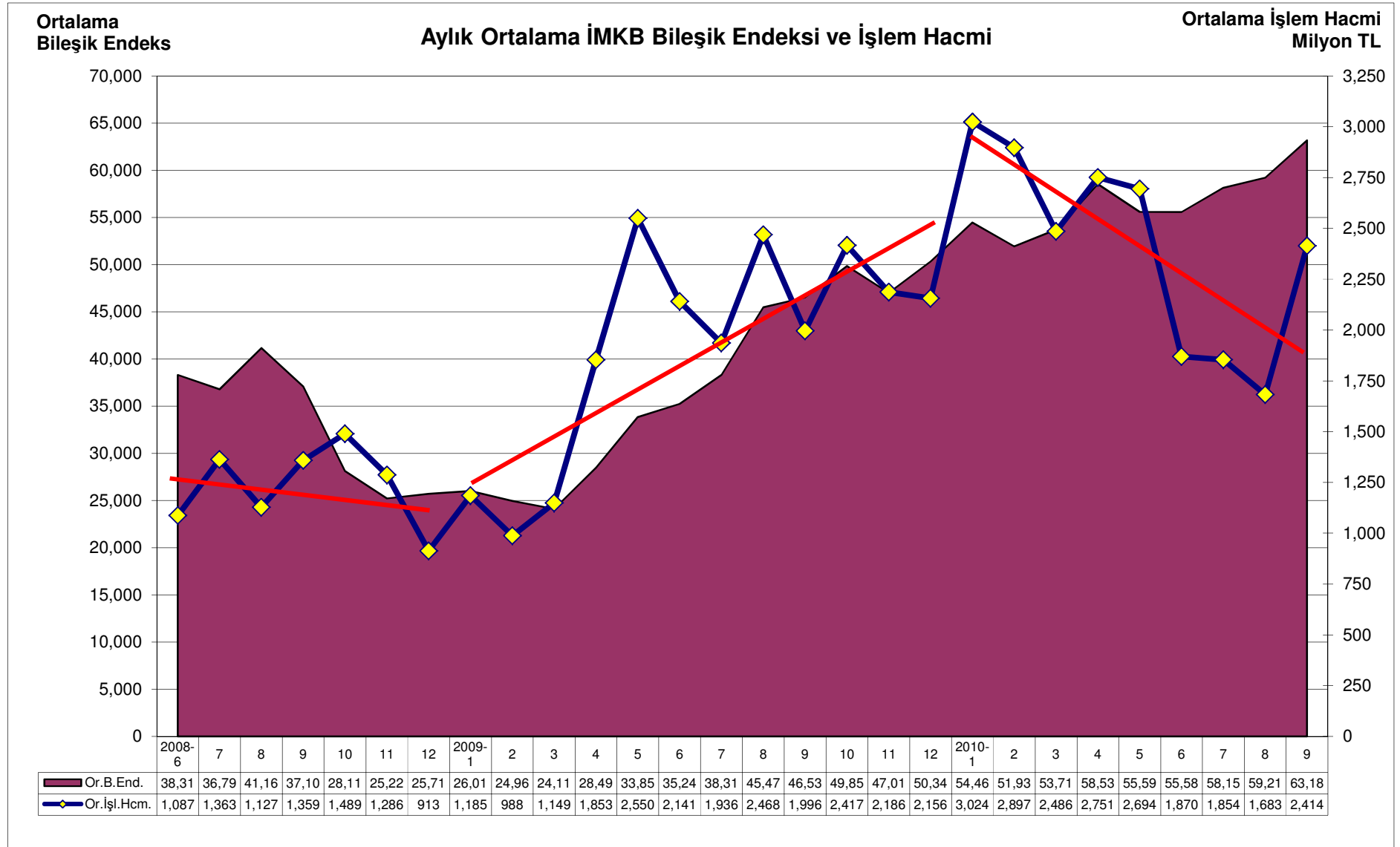
(Milyar TL) (1)	2006	2007	2008	2009	2010			
					Haziran	Temmuz	Ağustos	Eylül
<b>Alacaklıya Göre</b>	<b>345.0</b>	<b>333.5</b>	<b>380.3</b>	<b>441.5</b>	<b>458.9</b>	<b>458.3</b>	<b>463.2</b>	<b>460.7</b>
<b>İç Borç Stoku</b>	<b>251.5</b>	<b>255.3</b>	<b>274.8</b>	<b>330.0</b>	<b>343.1</b>	<b>345.2</b>	<b>347.3</b>	<b>347.8</b>
Piyasa	180.1	188.4	209.1	269.1	284.1	286.1	287.9	293.1
Kamu Kesimi	71.4	66.9	65.8	60.9	59.0	59.0	59.4	54.7
<b>Dış Borç Stoku</b>	<b>93.6</b>	<b>78.2</b>	<b>105.5</b>	<b>111.5</b>	<b>115.8</b>	<b>113.2</b>	<b>115.9</b>	<b>113.0</b>
Kredi	42.5	33.1	46.7	49.9	50.1	49.5	50.6	49.4
Uluslararası Kuruluşlar	27.3	20.1	28.6	32.2	31.6	31.0	31.7	31.0
(IMF Kredisi)	(15.1)	(8.3)	(13.0)	(11.9)	(10.7)	(10.2)	(10.0)	(9.3)
Hükümet Kuruluşları	7.1	5.7	8.4	8.5	8.9	8.9	9.1	8.8
Ticari Bankalar	8.1	7.2	9.7	9.2	9.6	9.6	9.8	9.6
Tahvil	51.1	45.1	58.8	61.6	65.7	63.7	65.3	63.6
<b>(Milyar Dolar)</b>								
<b>Alacaklıya Göre</b>	<b>245.5</b>	<b>286.3</b>	<b>251.5</b>	<b>293.2</b>	<b>291.4</b>	<b>304.6</b>	<b>305.7</b>	<b>317.5</b>
<b>İç Borç Stoku</b>	<b>178.9</b>	<b>219.2</b>	<b>181.7</b>	<b>219.2</b>	<b>217.9</b>	<b>229.4</b>	<b>229.2</b>	<b>239.6</b>
Piyasa	128.1	161.8	138.3	178.7	180.4	190.2	190.0	202.0
Kamu Kesimi	50.8	57.4	43.5	40.5	37.5	39.2	39.2	37.7
<b>Dış Borç Stoku</b>	<b>66.6</b>	<b>67.1</b>	<b>69.8</b>	<b>74.1</b>	<b>73.5</b>	<b>75.2</b>	<b>76.5</b>	<b>77.8</b>
Kredi	30.2	28.4	30.9	33.2	31.8	32.9	33.4	34.0
Uluslararası Kuruluşlar	19.4	17.3	18.9	21.4	20.1	20.6	21.0	21.4
(IMF Kredisi)	(10.8)	(7.1)	(8.6)	(7.9)	(6.8)	(6.8)	(6.6)	(6.4)
Hükümet Kuruluşları	5.1	4.9	5.5	5.7	5.6	5.9	6.0	6.1
Ticari Bankalar	5.7	6.2	6.4	6.1	6.1	6.4	6.4	6.6
Tahvil	36.3	38.7	38.9	40.9	41.7	42.3	43.1	43.8

Kaynak: Hazine Müsteşarlığı

(1) Dönem sonu ABD Doları döviz alış kuru ile TL'ye çevrilmiştir.

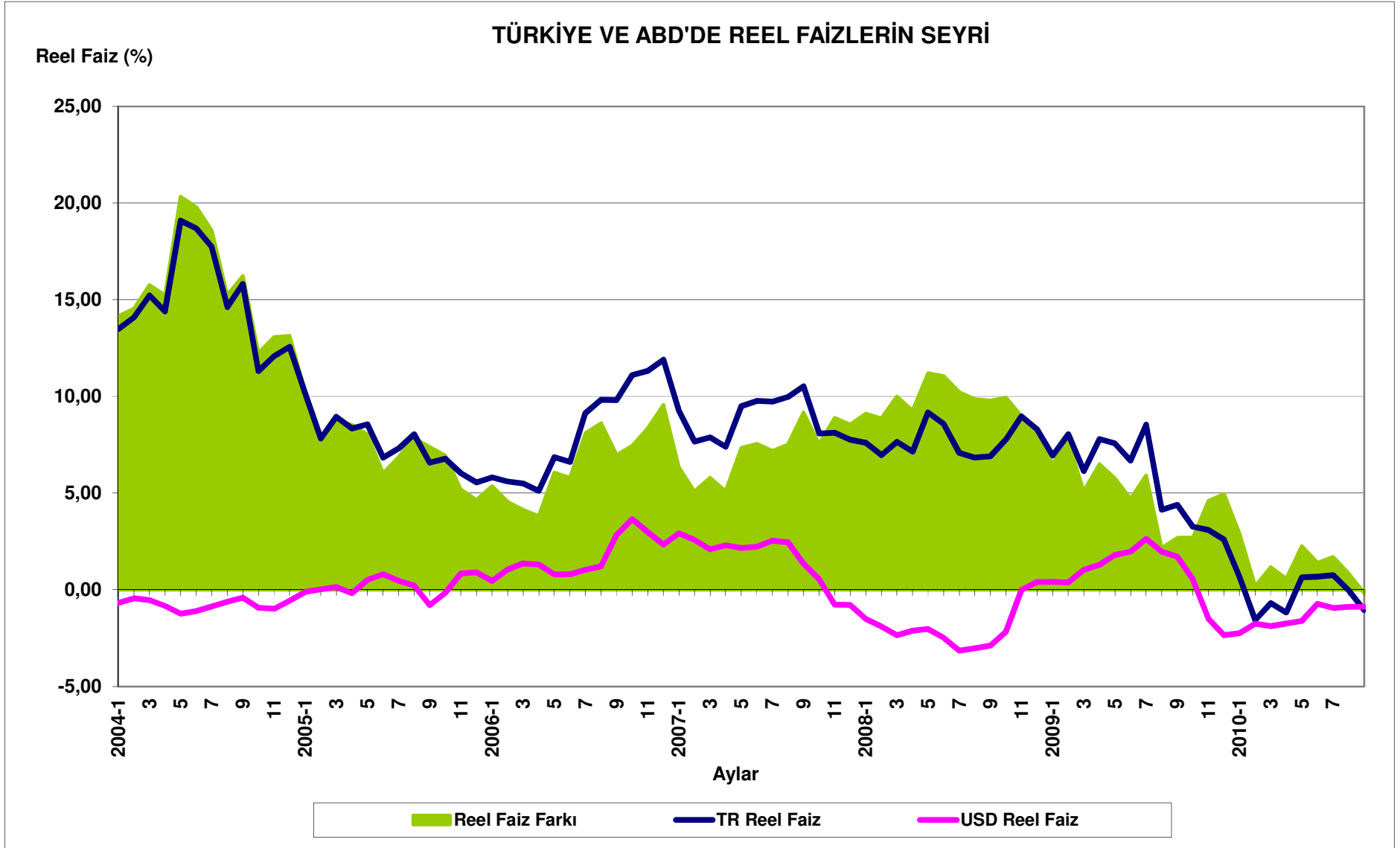


## IX - İMKB



Kaynak: İMKB

## X - FAİZ

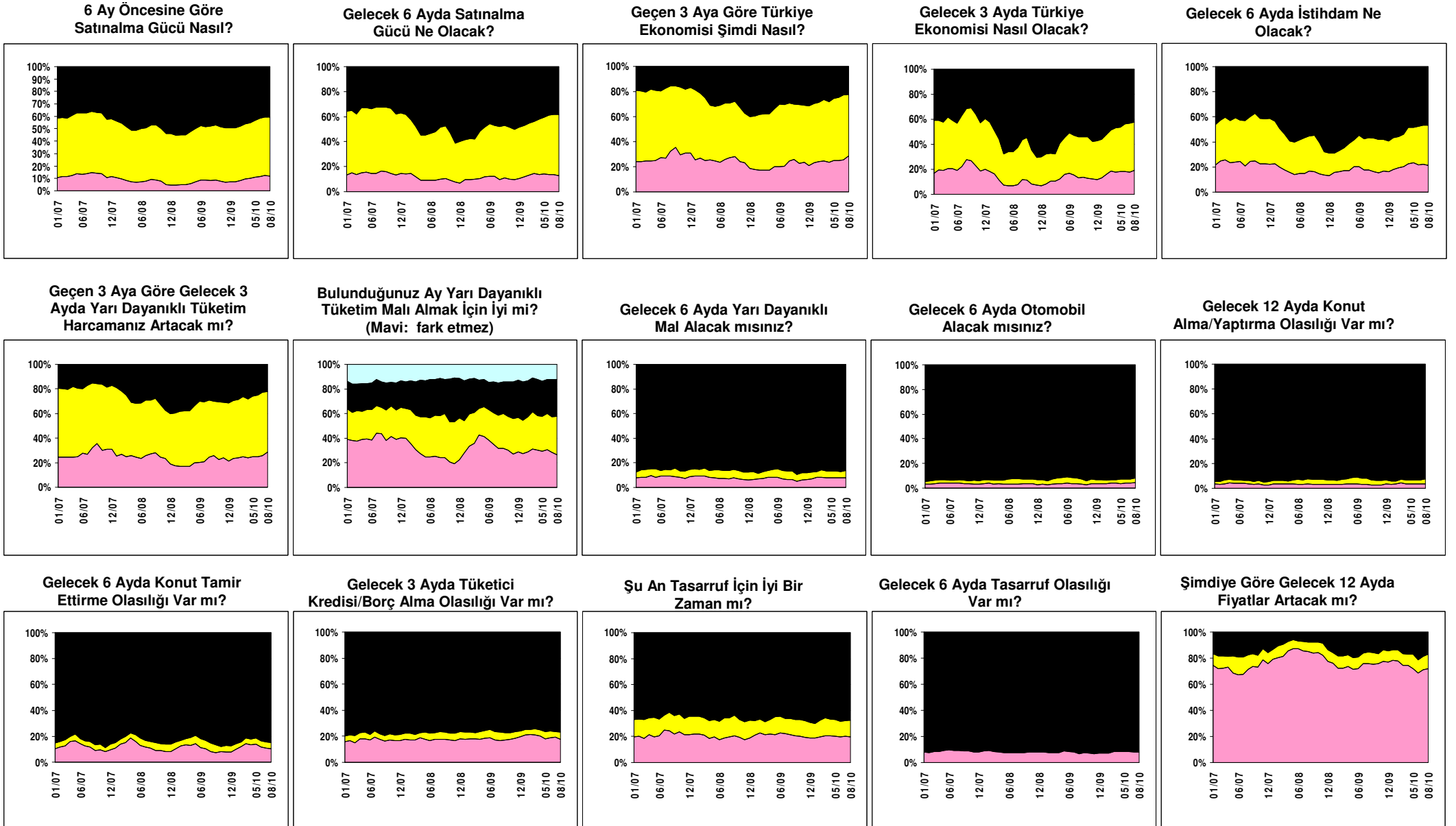


Kaynak: DPT

# XI - TÜKETİCİ EĞİLİMLERİ

İYİ/EVET  
KÖTÜ/HAYIR

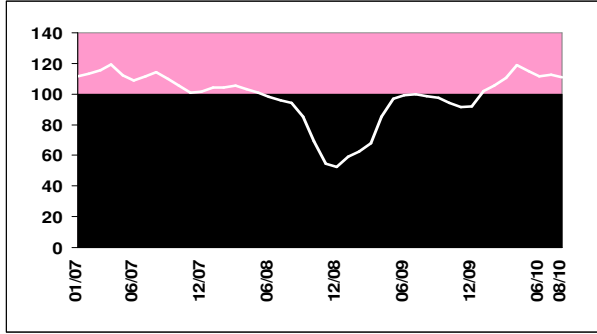
AYNI/SANMAM



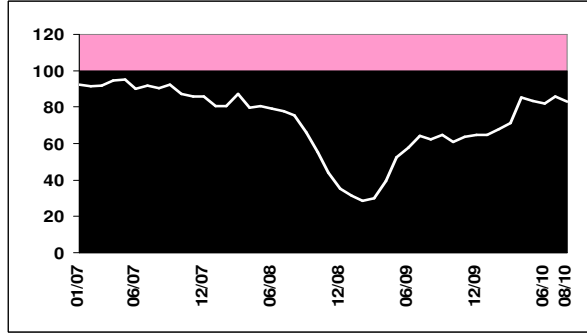
## XII - REEL KESİM GÜVEN ENDEKSİ VE İMALAT SANAYİ EĞİLİM ANKETİ

iyi KÖTÜ

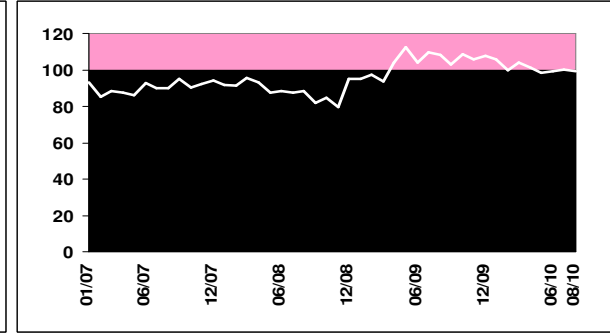
Reel Kesim Güven Endeksi



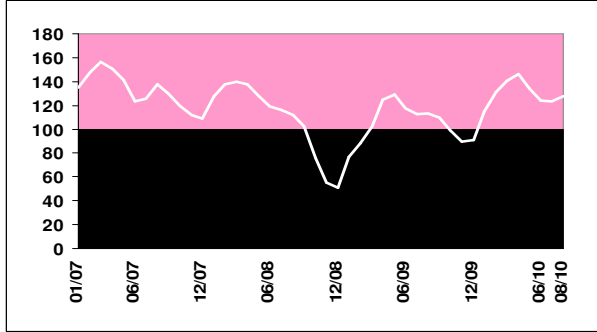
Toplam Sipariş (Mevcut Durum)



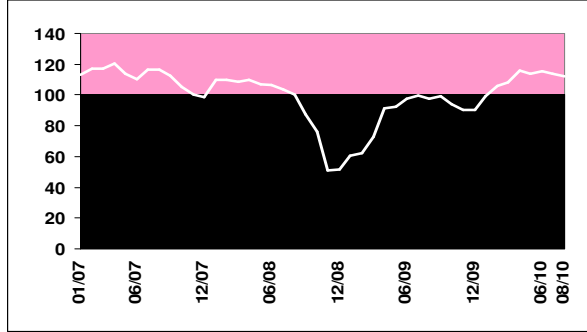
Mamul Mal Stoku (Mevcut Durum)



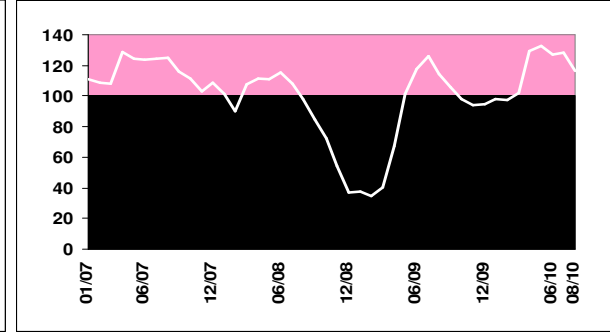
Üretim Hacmi (Gelecek 3 Ay)



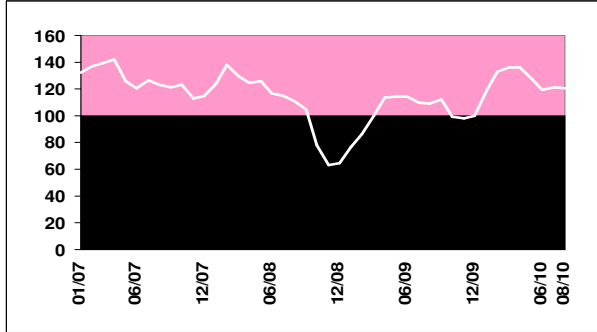
Toplam İstihdam (Gelecek 3 Ay)



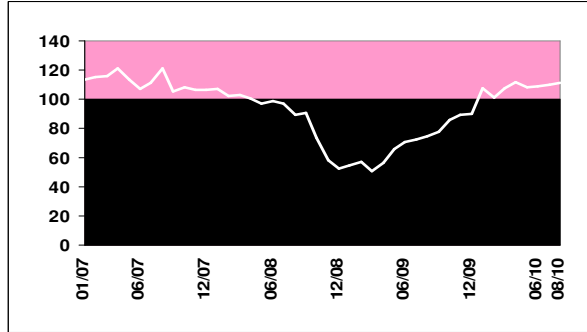
Toplam Sipariş (Son 3 Ay)



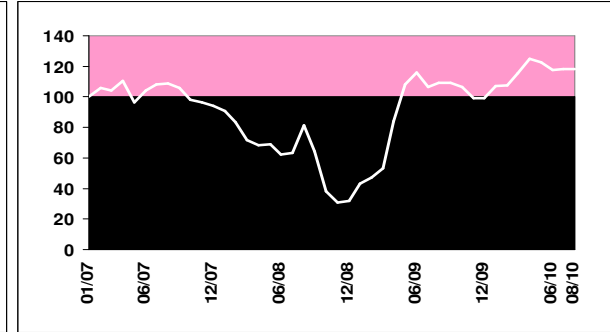
İhracat Siparişi (Gelecek 3 Ay)



Yatırım Harcaması



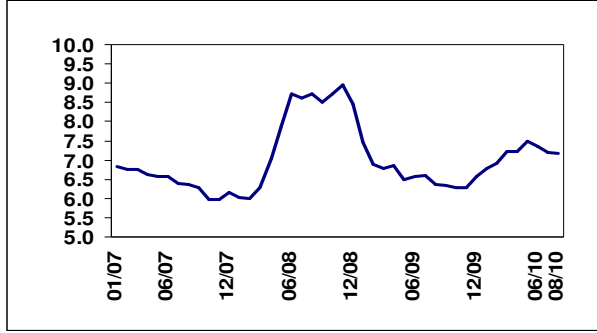
Genel Gidişat



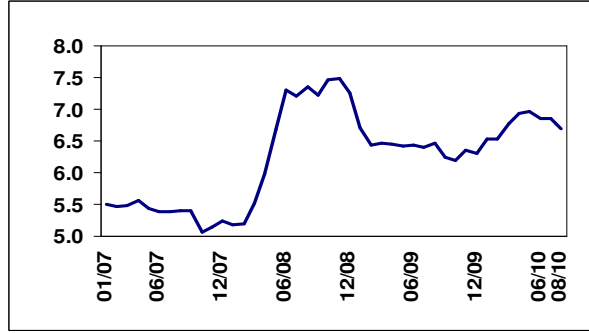
Kaynak: TCMB, TÜİK

## XIII - FİNANSAL KESİM GÜVENİ VE BEKLENTİLERİ

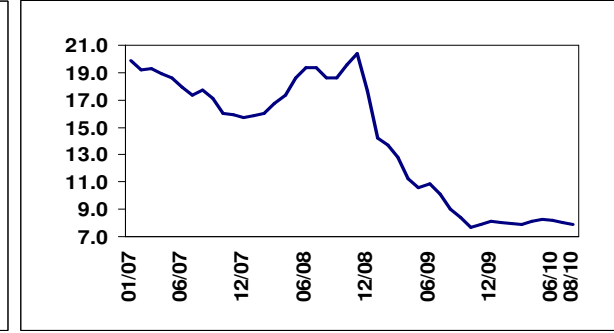
12 Ay Sonrası TÜFE



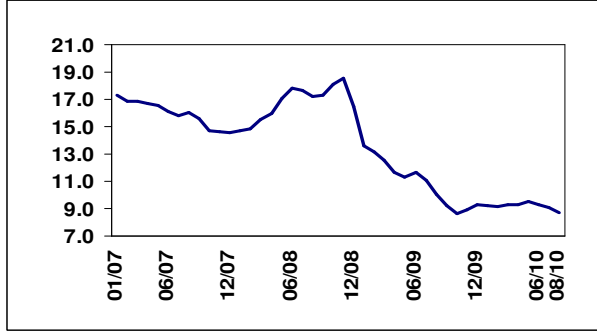
24 Ay Sonrası TÜFE



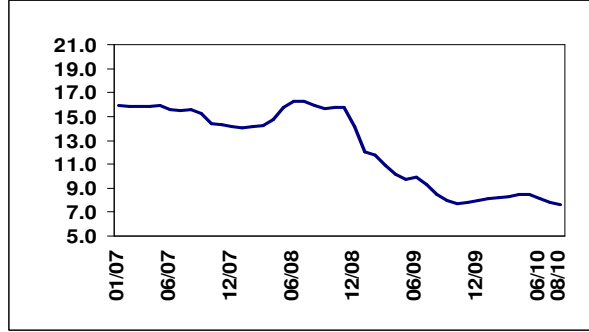
3 Ay Sonra 6 Aylık DİBS Bileşik Faiz



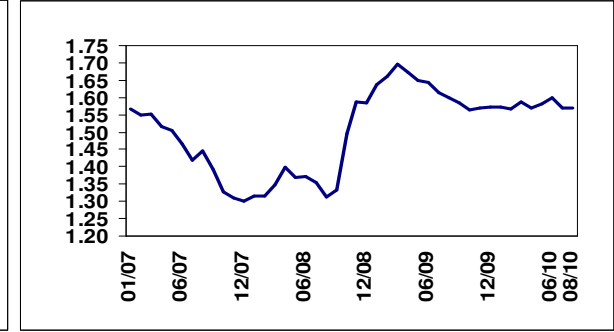
12 Ay Sonra 6 Aylık DİBS Bileşik Faiz



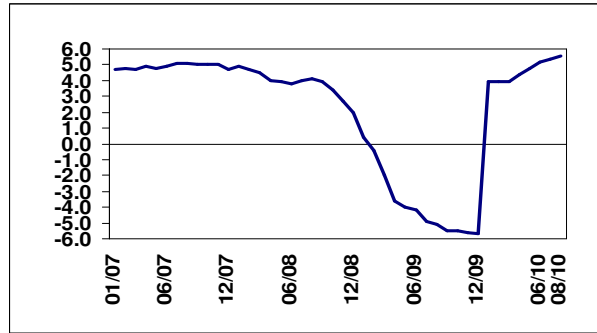
12 Ay Sonra O/N Basit Faiz



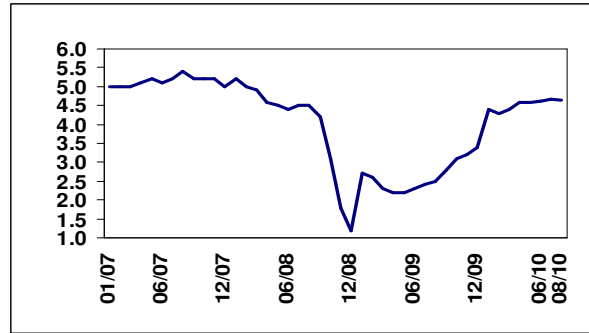
12 Ay Sonra USD Döviz Kuru



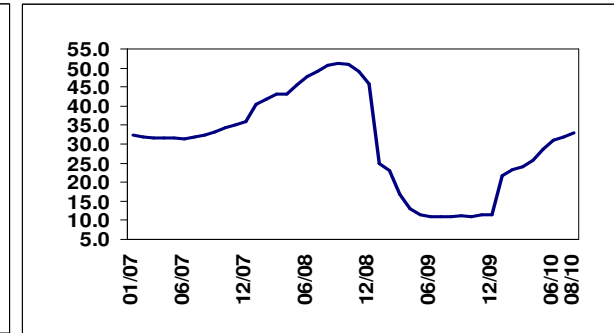
Cari Yılsonu Büyüme Oranı



Gelecek Yıl Büyüme Oranı

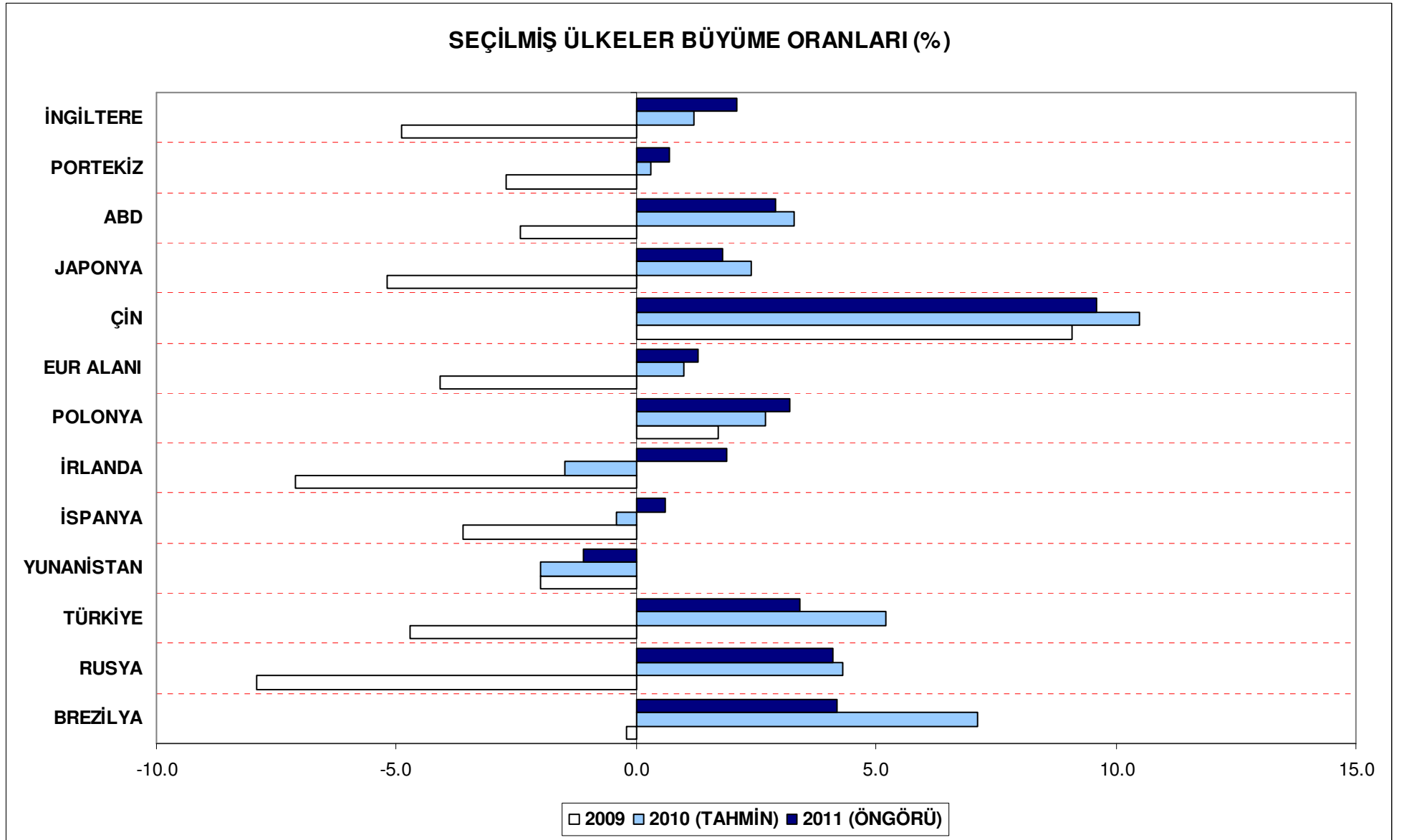


Yılsonu Cari İşlemler Açığı (Milyar USD)

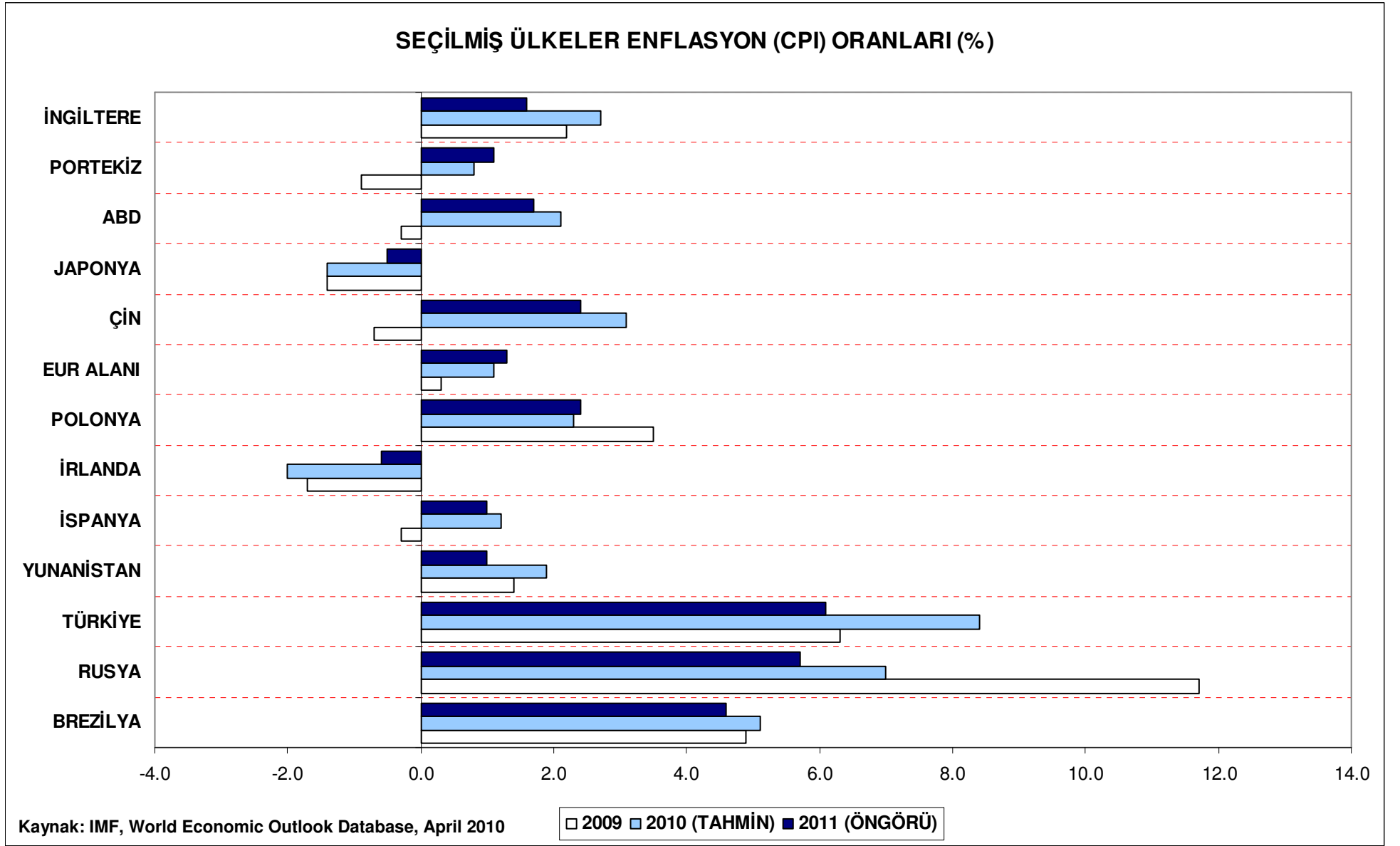


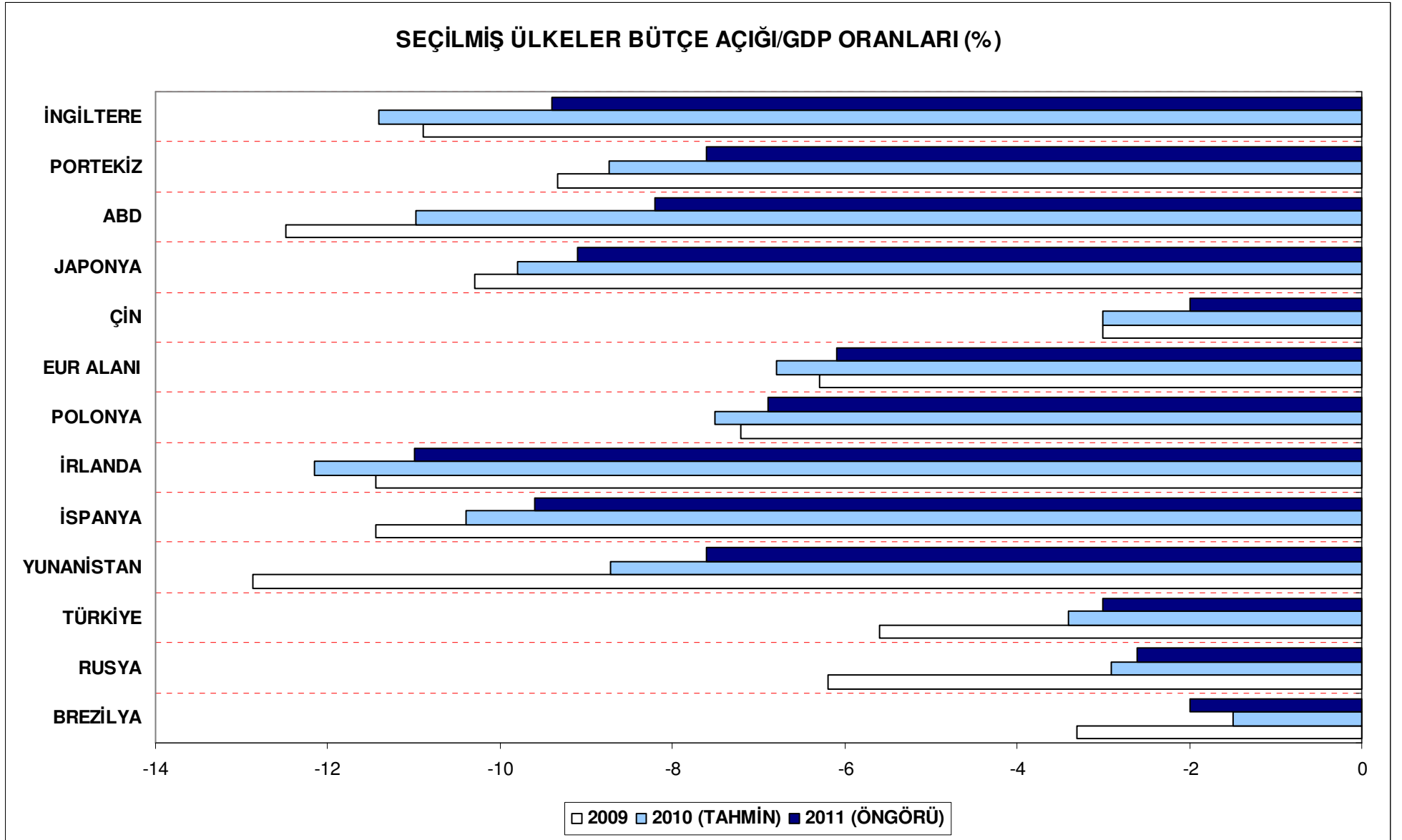
Kaynak: TCMB

## XIV – SEÇİLMİŞ ÜLKE GÖSTERGELERİ

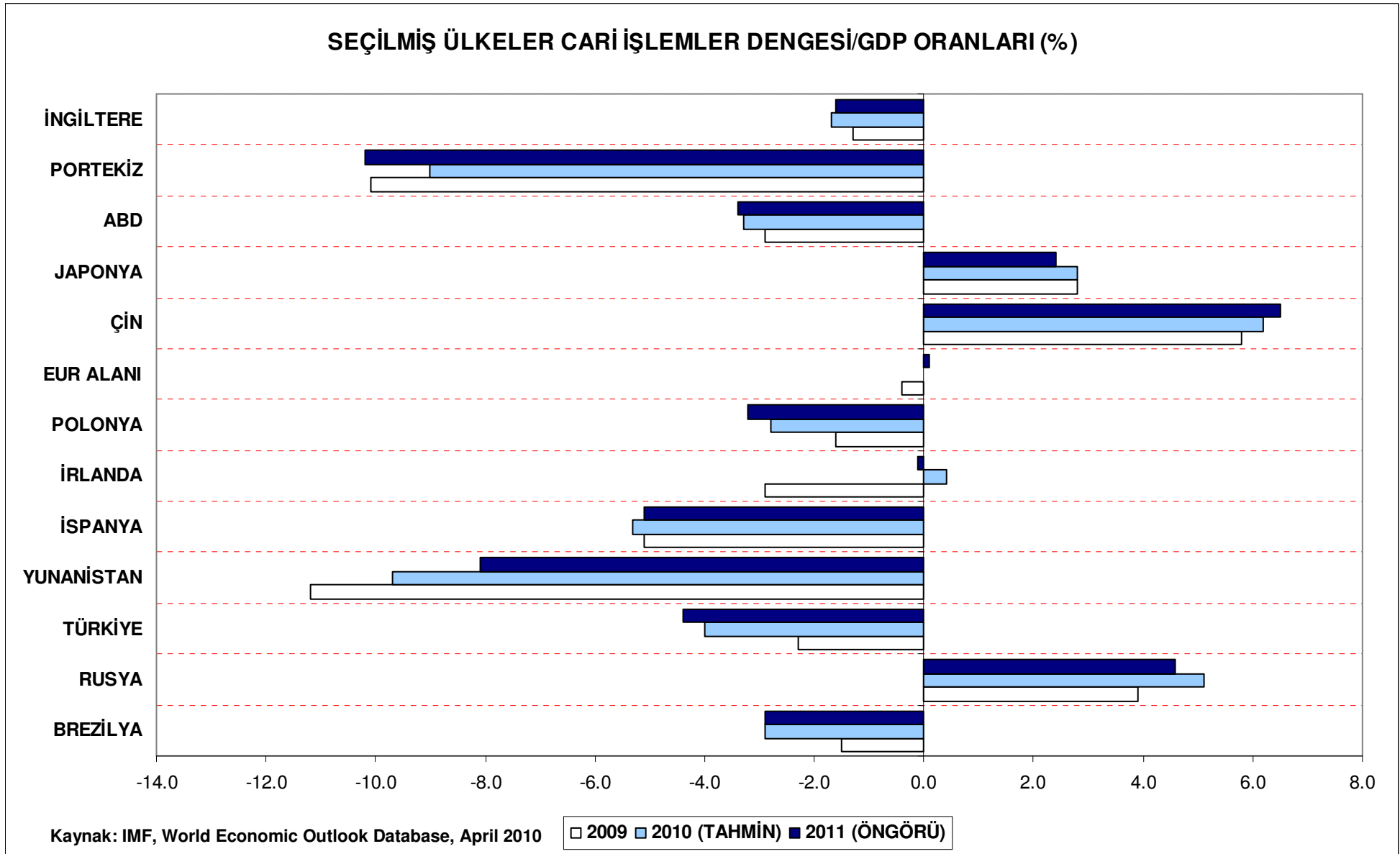


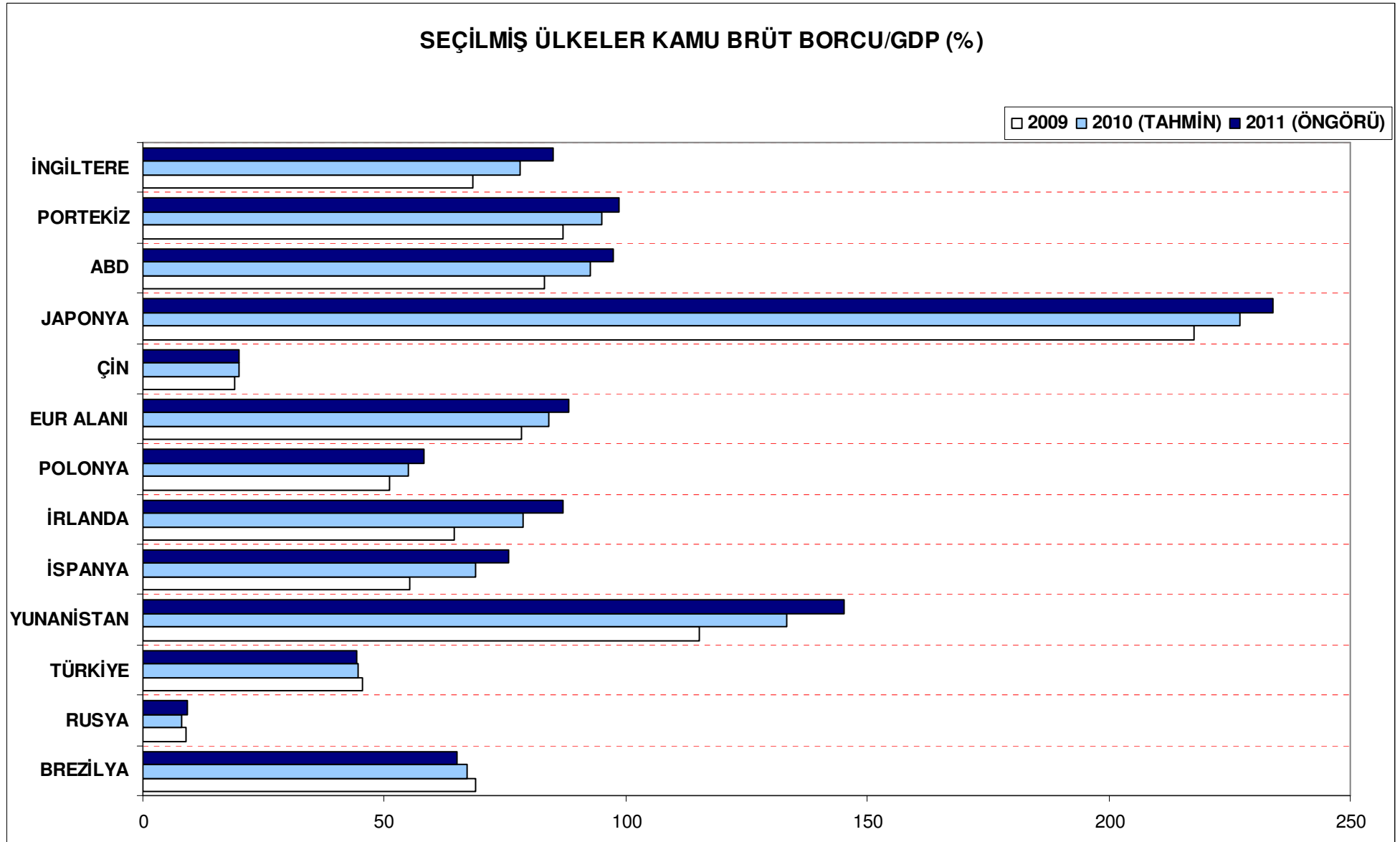
Kaynak: IMF, World Economic Outlook Database, April 2010





Kaynak: IMF, World Economic Outlook Database, April 2010; EUROSTAT





Kaynak: IMF, World Economic Outlook Database, April 2010; EUROSTAT

**TEMEL MAKROEKONOMİK GÖSTERGELER**

	2008	2009	2009			2010								
			Eki	Kas	Ara	Oca	Şub	Mar	Nis	May	Haz	Tem	Ağu	Eyl
<b>GSYİH (Milyon \$)</b>	742,094	616,753	-	-	170,041*	-	-	160,603*	-	-	173,861*	-	-	-
<b>Büyüme Oranı (1998 fiyatlarıyla)</b>	0.9	-4.7	-	-	6.0*	-	-	11.7*	-	-	10.3*	-	-	-
<b>İmalat Sanayi KKO (%)</b>	75.2	65.0	68.0	69.2	67.6	67.8	67.8	67.9	72.2	73.4	73.6	74.7	73.4	73.9
<b>İşsizlik Oranı (%)</b>	11.0	14.0	13.0	13.1	13.5	14.5	14.4	13.7	12.0	11.0	10.5	10.6	-	-
<b>Enflasyon (ÜFE) (%) (yıllık)</b>	8.11	5.93	0.19	1.51	5.93	6.30	6.82	8.58	10.42	9.21	7.64	8.24	9.03	8.91
<b>Enflasyon (TÜFE) (%) (yıllık)</b>	10.06	6.53	5.08	5.53	6.53	8.19	10.13	9.56	10.19	9.10	8.37	7.58	8.33	9.24
<b>TÜFE Bazlı Reel Kur Endeksi</b>	114.7	116.6	117.2	116.3	116.6	122.7	124.4	123.2	127.5	128.3	127.5	125.7	127.1	129.0
<b>Cari İşlemler Dengesi (Milyon \$)</b>	-41,946	-14,402	354	-1,783	-3,219	-3,107	-2,776	-4,348	-4,498	-3,084	-3,550	-3,649	-2,966	-
<b>Dış Ticaret Dengesi (Milyon \$)</b>	-69,936	-38,785	-2,677	-3,714	-4,964	-3,846	-3,504	-5,120	-5,524	-4,911	-5,668	-6,465	-6,880	-
- İhracat-FOB (Milyon \$)	132,028	102,143	10,096	8,903	10,055	7,844	8,276	9,900	9,413	9,813	9,561	9,598	8,557	-
- İthalat-CIF (Milyon \$)	201,964	140,928	12,773	12,618	15,019	11,690	11,779	15,020	14,937	14,724	15,229	16,062	15,437	-
<b>Karşılama Oranı (%) X/M</b>	65.4	72.5	79.0	70.6	66.9	67.1	70.3	65.9	63.0	66.6	62.8	59.8	55.4	-
<b>Bütçe Gelirleri (Milyon TL)</b>	208,898	215,060	19,010	17,818	21,875	19,525	20,019	17,488	20,718	24,866	18,448	21,729	26,252	18,493
- Vergi Gelirleri (Milyon TL)	168,087	172,417	13,831	15,084	18,169	17,304	16,136	14,461	15,330	19,551	15,839	16,959	23,208	15,000
- Diğer Gelirler (Milyon TL)	40,811	42,644	5,178	2,734	3,705	2,221	3,883	3,027	5,388	5,316	2,609	4,769	3,044	3,493
<b>Bütçe Harcamaları (Milyon TL)</b>	225,967	267,275	21,431	20,942	27,733	22,646	22,290	23,436	25,173	19,054	23,894	23,775	23,163	25,395
- Faiz Harcamaları (Milyon TL)	50,661	53,201	4,731	1,915	1,042	6,090	4,577	4,333	7,053	2,165	3,343	4,624	3,103	3,997
- Faiz Hariç Harcamalar (Milyon TL)	175,306	214,074	16,699	19,027	26,692	16,557	17,713	19,103	18,120	16,890	20,552	19,150	20,060	21,398
<b>Bütçe Dengesi (Milyon TL)</b>	-17,069	-52,215	-2,421	-3,124	-5,859	-3,121	-2,271	-5,948	-4,455	5,812	-5,446	-2,046	3,089	-6,903
- Faiz Dışı Denge (Milyon TL)	33,592	986	2,310	-1,209	-4,817	2,968	2,306	-1,616	2,597	7,977	-2,103	2,578	6,192	-2,906
<b>Merkezi Yönetim Toplam İç Borç Stoku (Milyon \$)</b>	181,728	219,170	220,686	222,051	219,170	226,458	220,972	223,910	231,804	219,492	217,909	229,417	229,211	239,636
<b>Merkezi Yönetim Toplam Dış Borç Stoku (Milyon \$)</b>	69,754	74,054	74,864	75,288	74,054	75,770	73,768	74,471	76,819	75,222	73,525	75,225	76,502	77,833

\*: Çeyrek dönemler itibariyledir.

Kaynak: TÜİK, TCMB, Hazine Müsteşarlığı, Maliye Bakanlığı

**İletişim Bilgileri**Oktay Küçükiremitçi  
Mustafa Şimşek  
Emrah ErsoyMüdür  
Müdür Yardımcısı  
Uzman Yardımcısı0312 4179200/2340  
0312 4179200/2340  
0312 4179200/2343[oktay.kucukiremitci@kalkinma.com.tr](mailto:oktay.kucukiremitci@kalkinma.com.tr)  
[mustafa.simsek@kalkinma.com.tr](mailto:mustafa.simsek@kalkinma.com.tr)  
[emrah.ersoy@kalkinma.com.tr](mailto:emrah.ersoy@kalkinma.com.tr)